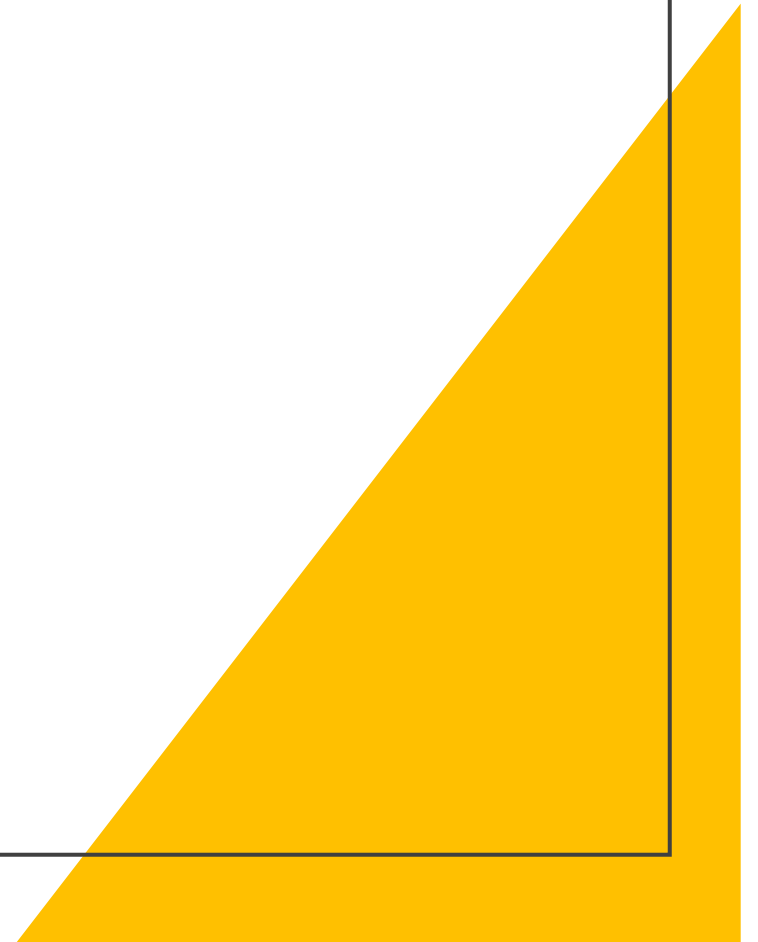


ADZ6003 Major Project: PERFORM

Rebecca Chick

ST20139007

WordPress: rebeccachick.home.blog



MY BRIEF

- VENUE: Boneyard, Cardiff
- BUILDING: Shipping Container
- DESIGN: Musical Theatre – GREASE

A musical performance starring Grease set in the genre of Rock 'n' Roll expressing how performers act, sing and dance all in one.

The site will be reformed into a 1950's retro theme taking the members of the public back through time showing how it once was.

Grease the musical is an upbeat performance of a love story, where the public can interact by dancing and singing along allowing them to be part of the act but era it was once set in. By even dressing up in the style or as the actor's roles.



HOST BUILDING ANALYSIS

- LOCATION ANALYSIS -

Its between two train tracks

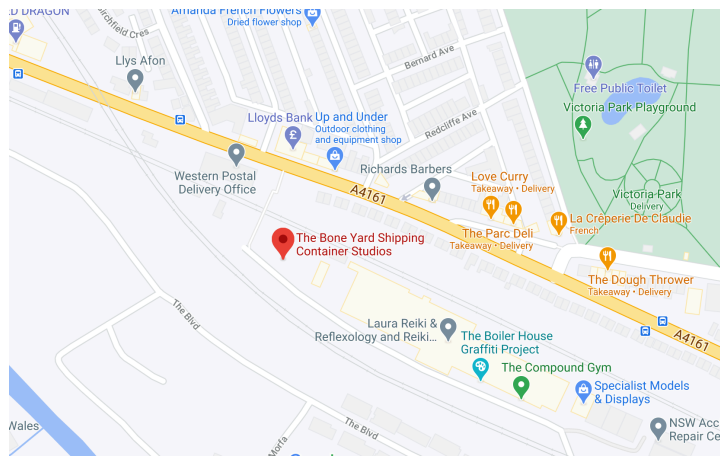
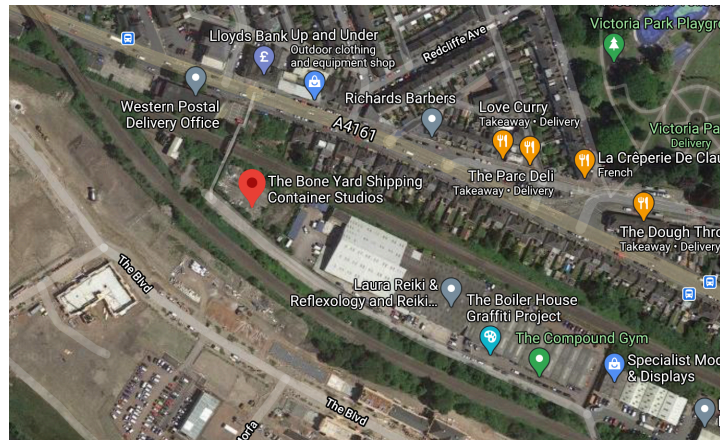
One train route quiet and the other busy

Possibly no noise complaints due to not many houses close by the site

Easily assessable via car, bus, bike walking

Major bus routes on Cowbridge Road East

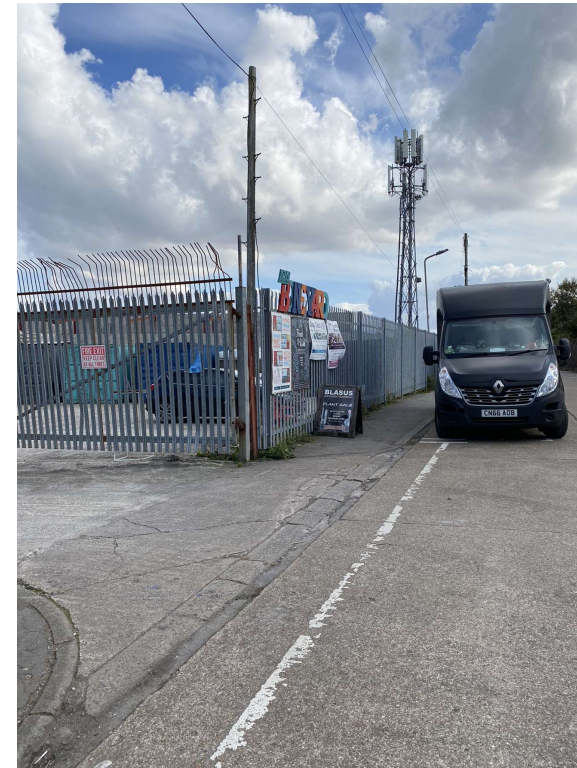
Access over railway bridge via footbridge



Metal fencing to enclose the site

Surrounded by an industrial work site

Not on a main road



Assessable for wheelchair users

One entrance (but could have more)

Based on the outskirts of City Centre

Streetlamps lighting up the area

Close to new housing estate (perfect idea for musicals to have a family night/day out)

View overlooking the sight when standing on foot bridge

Can add a lift, ramp and stairs on the site

The exterior of the site gives you the feeling that there would be lots of heavy vehicles driving back and for

Foot bridge could be a restriction for push chairs or wheelchairs due to the stairs

HOST BUILDING ANALYSIS - SHIPPING CONTAINERS ANALYSIS -

Can stack containers vertically and horizontally

Very sturdy and weatherproof possibly load if rain hits them (could use a soft material to quieten the noise)

Open plan area

Already brightly coloured fitting in with 1950's colour palette

More lights to light up the site so there's no hazards at dark evenings

Possibly load due to trains passing

Maintenance needed incase rust or corrosion occurs

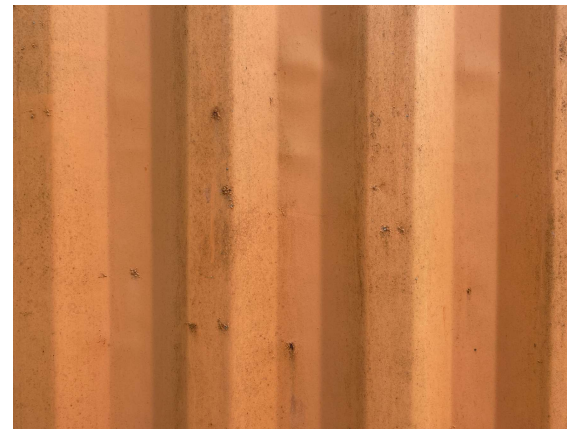
The use of the bright colours gives and inviting approach to customers

Flat concrete plot of land

Easy to add windows and doors



Easy to maintain a one-way system due to Covid-19



Circulation flow is assessable to wheelchair users to enter each container

Structure of the containers are along the boarder of the fence creating an open space courtyard

Parking outside the site and possibly inside the site



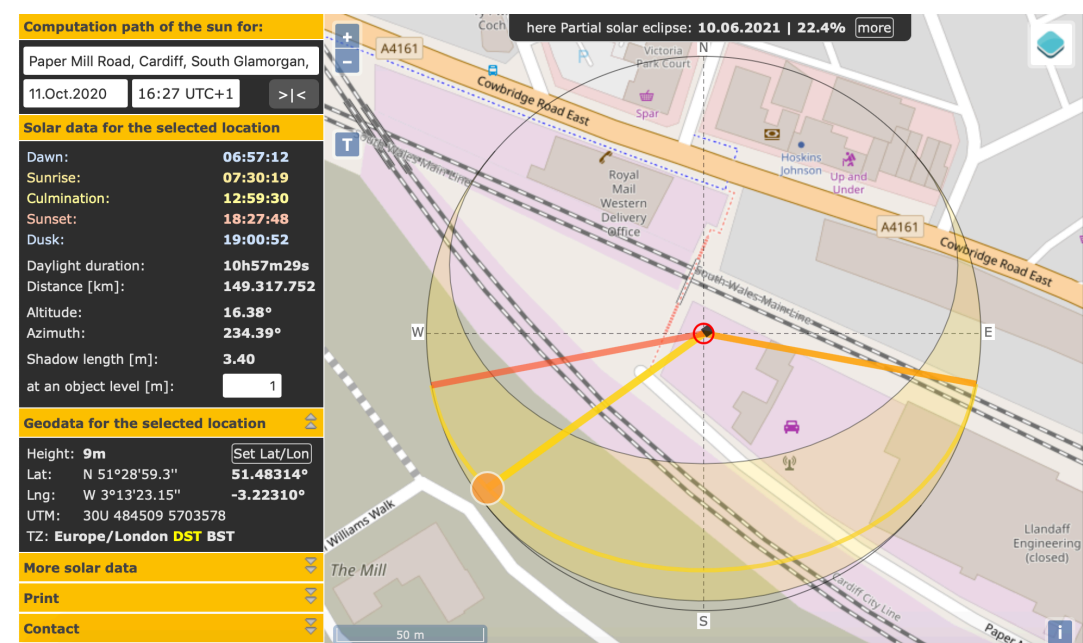
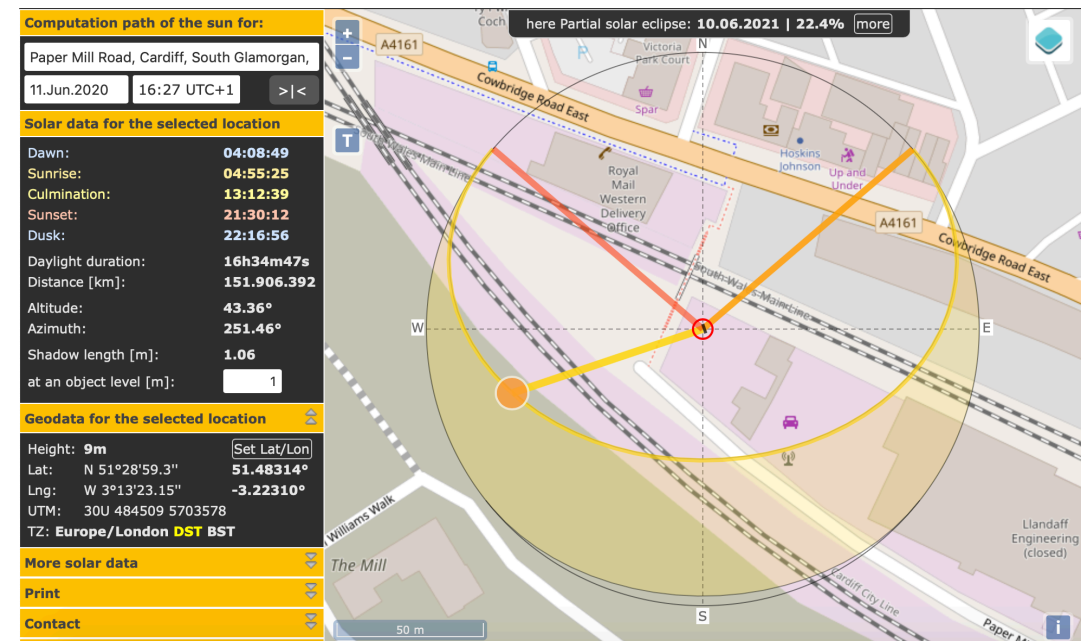
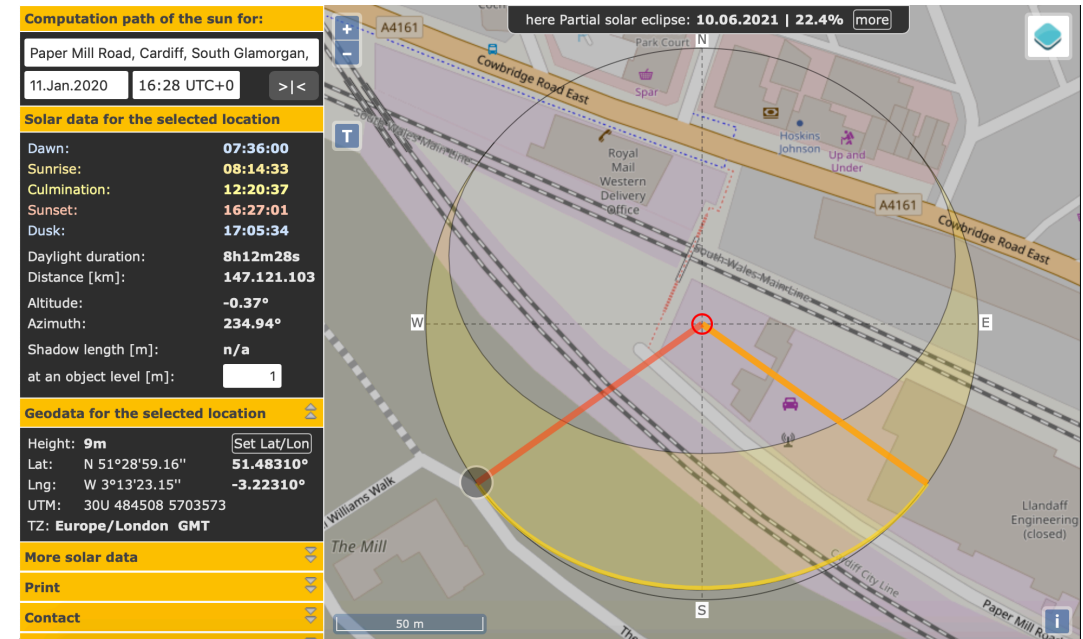
SUN PATH ANALYSIS

- BONEYARD CARDIFF -

- From front entrance looking into the site it gets the maximum sun throughout the day.
- Back of the site gets very little sunlight.
- Sides of the site get sunlight at different times of the day, as the right-hand side would get more when the sun is setting, and the left side would get the sun in the morning.
- Throughout the whole site the area gets a nice amount of sun however, the containers will still need artificial lighting in them when the sun goes down to illuminate so customers are able to see their surroundings.

KEY

-  - SUNRISE
-  - SUNSET
-  - SUN PATH



ACCOMMODATION SCHEDULE

ACTIVITIES NEEDED FOR 'PERFORMANCE'

- Toilets
- Backstage
- Control Box
- Stage
- Orchestra Pit
- Dressing Rooms
- Seating area

EXTRA ACTIVITIES NEEDED FOR 'PERFORMANCE'

- Popcorn/Ice-cream stall
- Lights
- Foyer (Box Office)

ACTIVITIES NEEDED FOR 'BAR'

- Neon lighting
- Jukebox
- Liqueur shelving
- Fridge
- Bar lowered area for wheelchair users
- Dining Area
- Toilets
- Bar/Kitchen
- Storage

EXTRA ACTIVITIES NEEDED FOR 'BAR'

- Cups/plates
- Beer press
- Posters
- Car
- Till
- One-way system
- Snack food

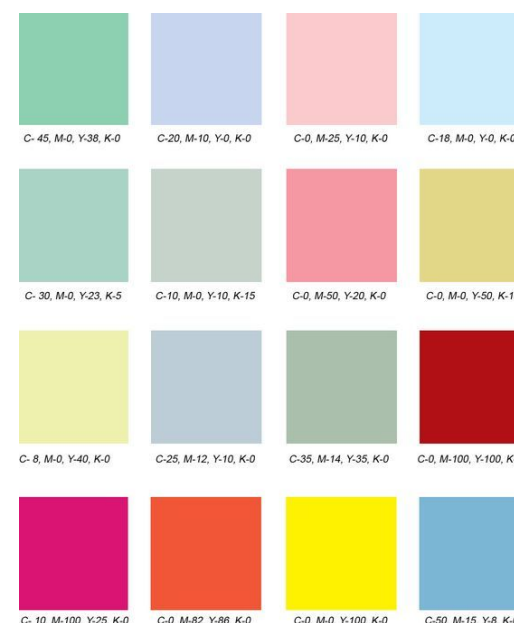
ACTIVITIES NEEDED FOR 'DISPLAY'

- Merchandise Stall (clothing)
- Pink Ladies
- T-Birds
- Till area
- Shelving
- Posters

HOW TO PUT ON A MUSICAL

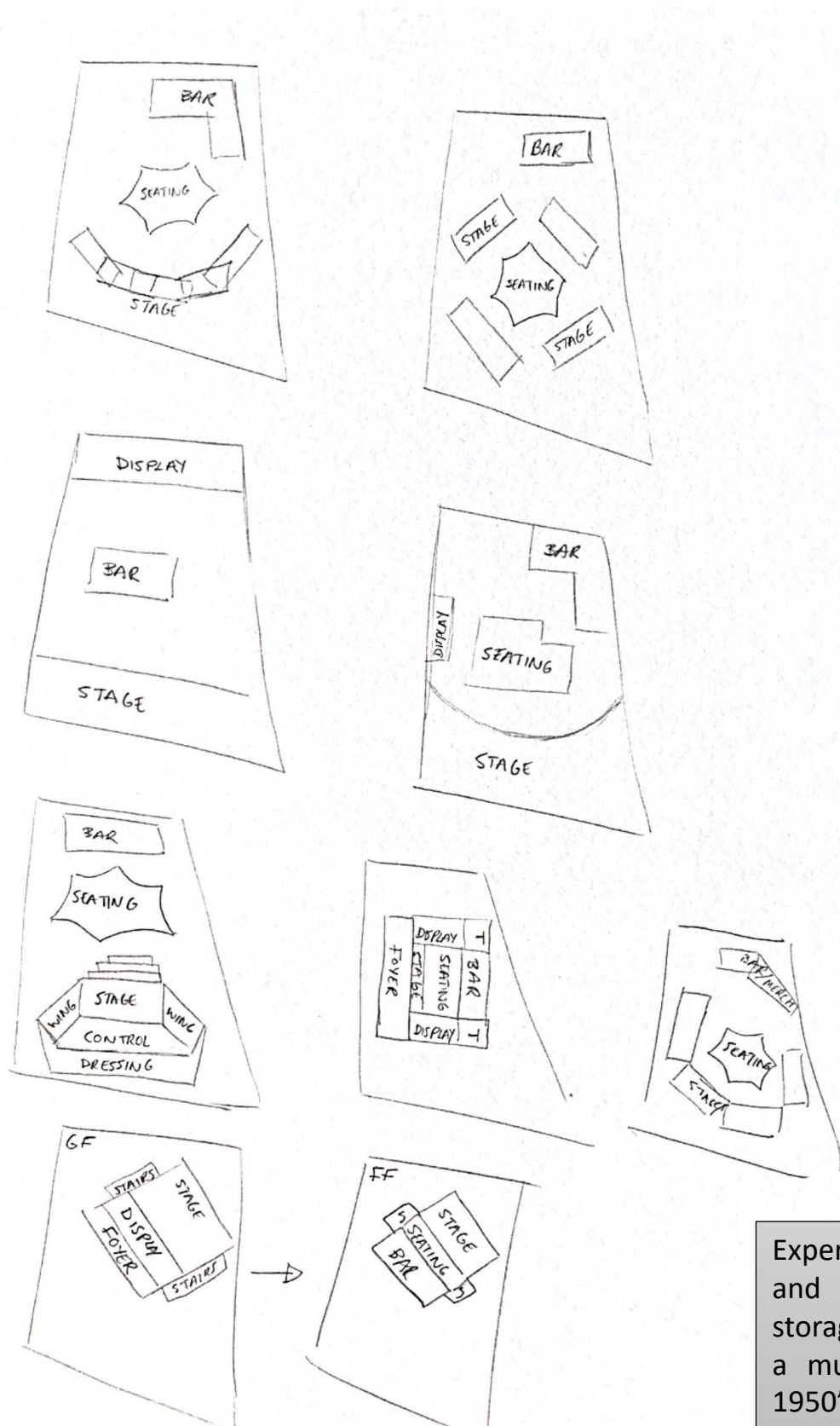
- Producer
- Directors
- Assistant Director
- Musical Director
- Choreographer
- Set Designer
- Costume Designer
- Lighting/Sound Designer
- Stage Manager
- Stage Crew
- Property Master
- House Manager
- Publicity Coordinator
- Program Coordinator

RETRO COLOUR PALETTE - 1950's -

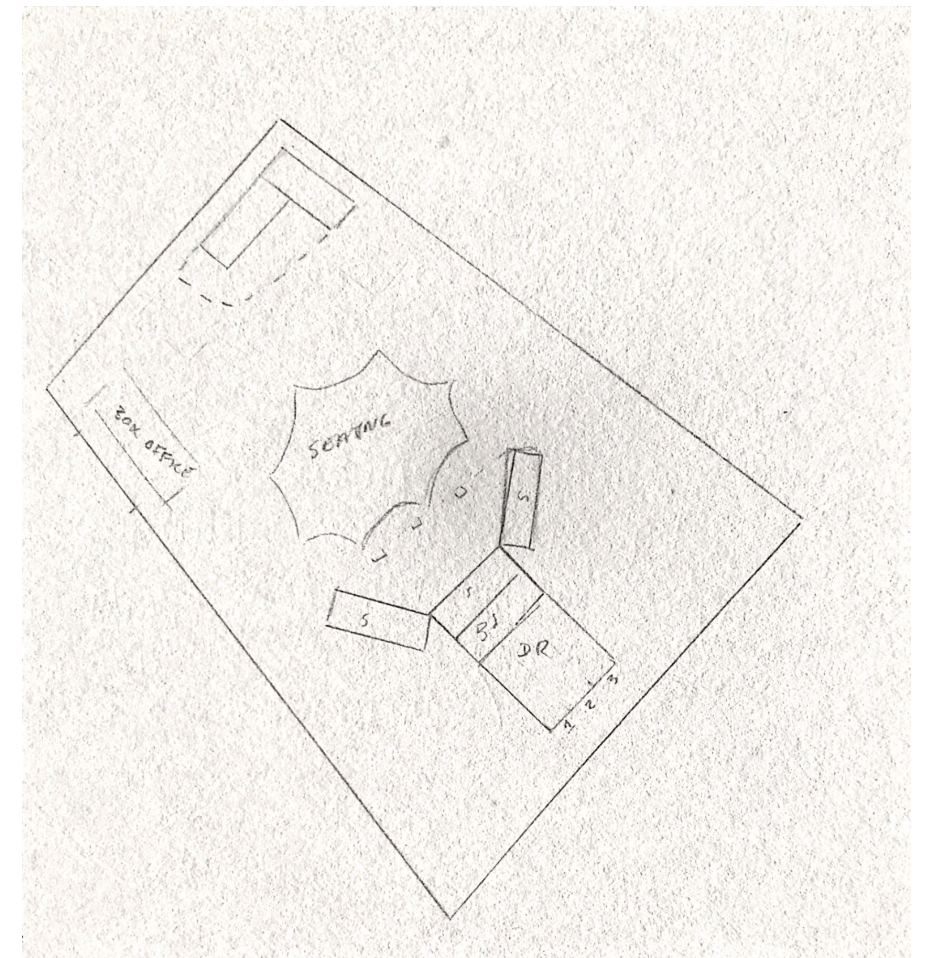


- Pastels
- Pink
- Turquoise
- Mint green
- Pale yellow
- Pale blue
- Flowers
- Plaid patterns
- Wallpaper
- Abstract, geometric, futuristic
- Brown
- Purple

ROUGH SKETCHES - SITE LAYOUTS -



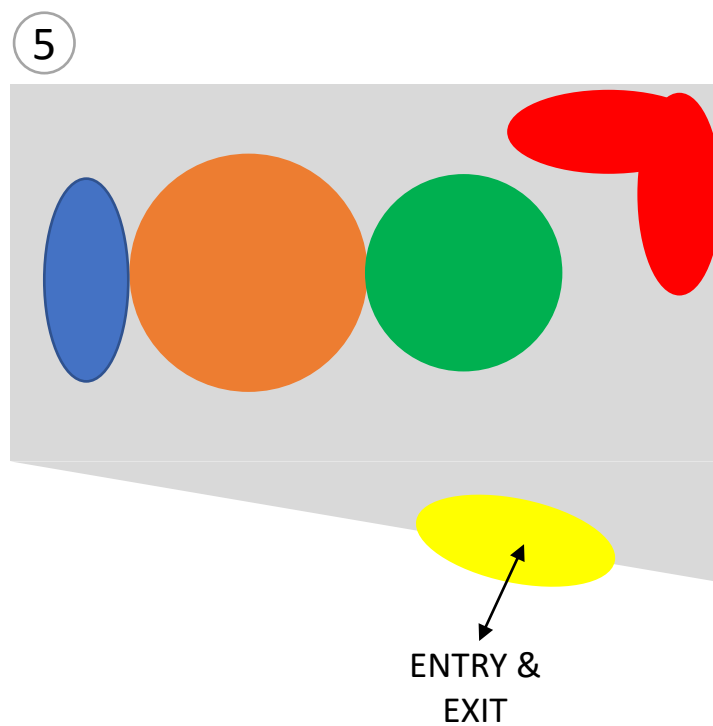
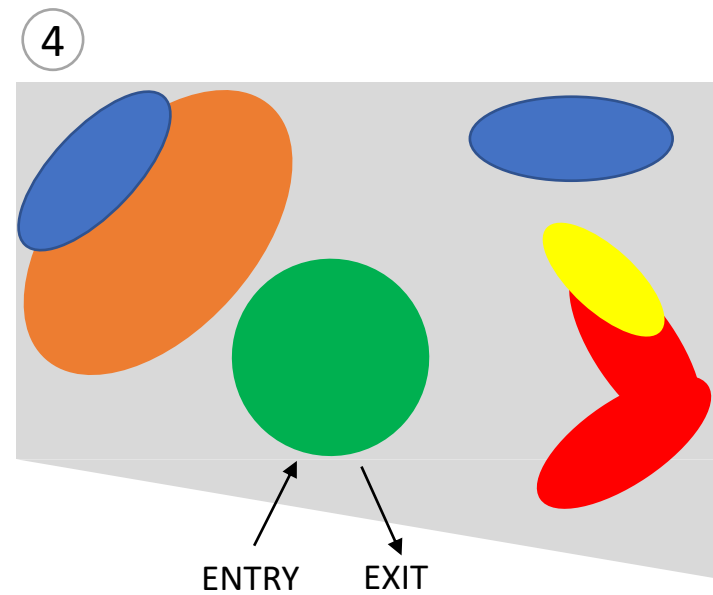
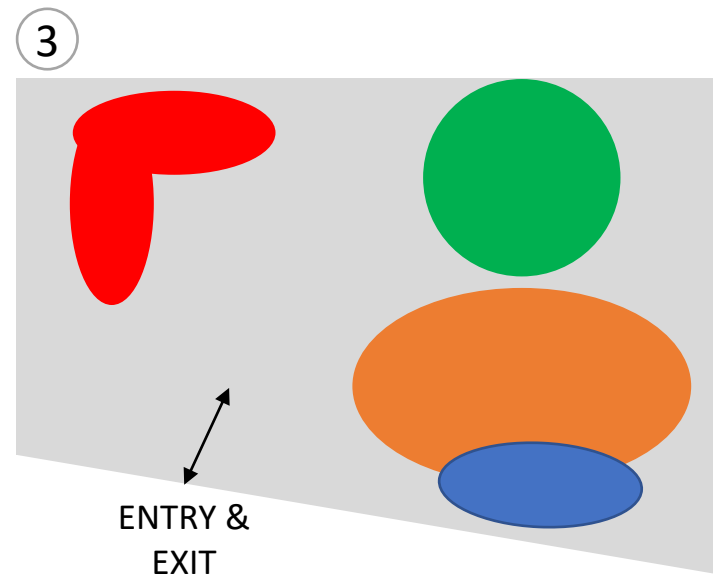
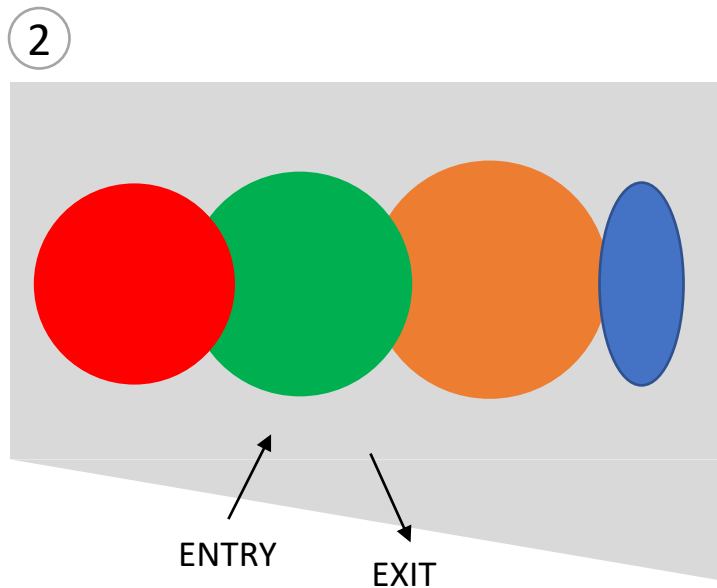
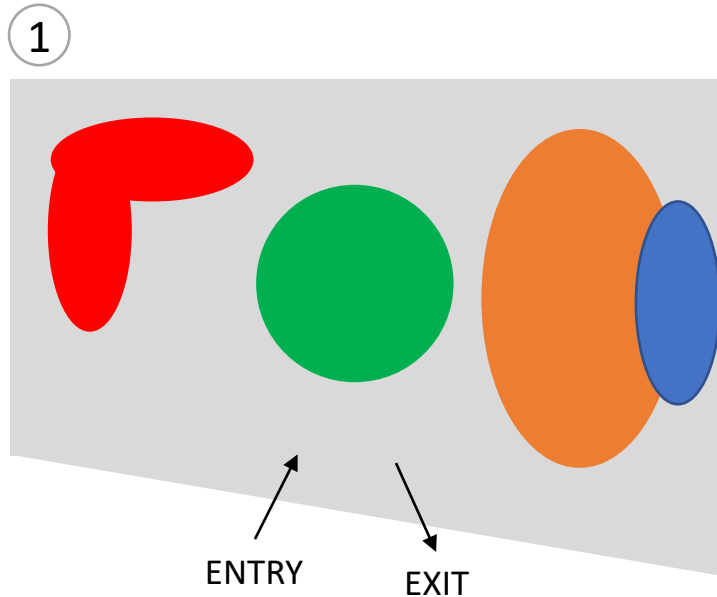
Experimenting different layouts and positioning of how the storage containers can work for a musical performance in the 1950's theme.



INITIAL SITE PLAN DESIGN IDEA

- One entrance.
- Stage on the right-hand side due to the area being wider to included a dressing room and cast toilets etc.
- seating area directly in the middle to give an inviting feeling when entering the site.
- Box office/display at the start of entrance to control the amount of customers entering and leaving.
- Bar zone behind the seating area to allow refreshments during the performance and not distract customers if it was on the side of the seating area.

BUBBLE DIAGRAMS



CIRCULATION

ALL INCLUDE ONE WAY SYSTEM THROUGHOUT DESIGN.

- The seating area will be an open plan container with only the roof and bottom remaining to allow a constant flow of fresh air.
- The bar will have an upstairs zone set up in the same style as the seating area and a ground floor platform for more sitting due to no access sitting inside the bar.

SPATIAL CONNECTIONS

- The bar area is made up of 2-3 containers joined to create an L shape with or without a container on top.
- The dressing room is joined onto the back of the stage allowing cast easy access back and for the stage to perform.
- Connected to the dressing room is toilets allowing cast member quick access in between scenes to use.

KEY

- DRESSING ROOM/CAST TOILETS
- STAGE
- SEATING AREA
- BAR/CUSTOMER TOILETS
- BOX OFFICE/DISPLAY STAND

ZONED PLANS

- BASED OFF BUBBLE DIAGRAMS -

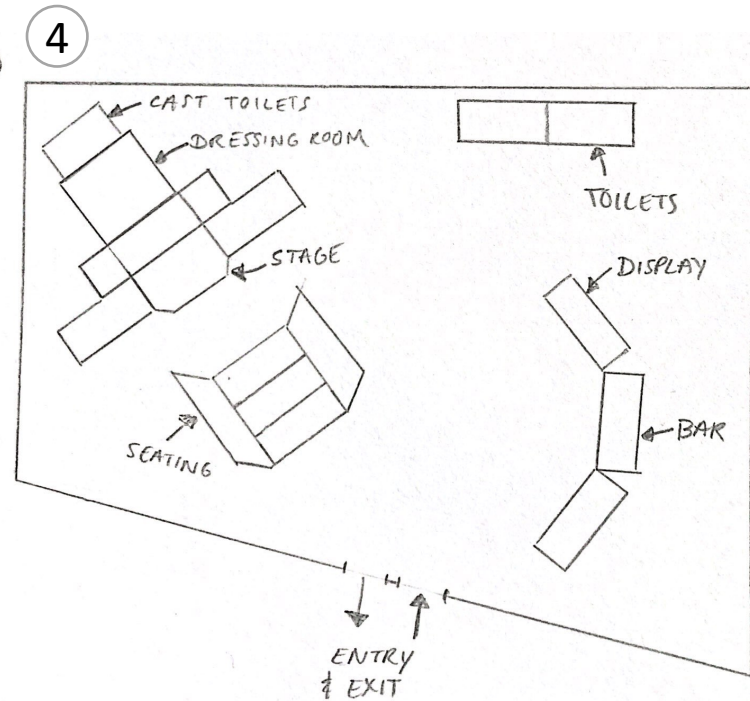
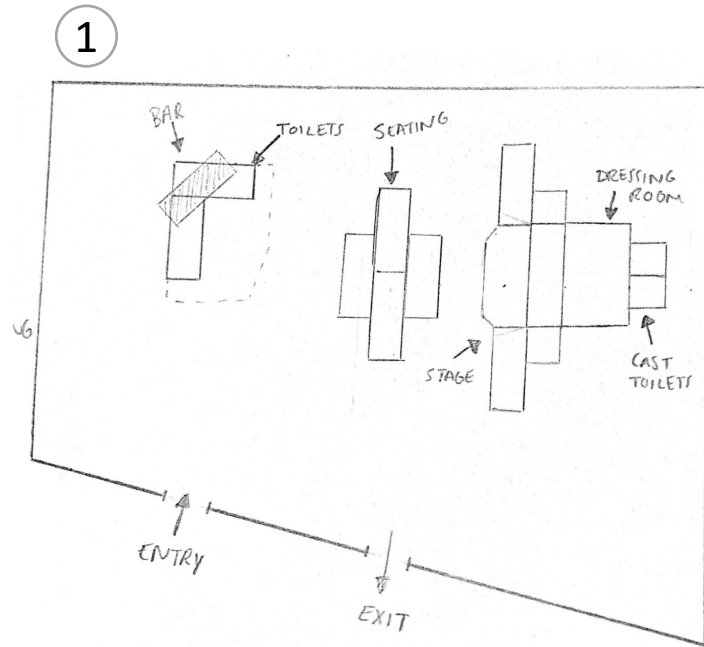
WHAT WORKS WELL:

DESIGN 1 –

- Clear one-way system on entering and leaving.

DESIGN 3 -

- Allows access to have on site parking.
- Each activity has its own zone.
- In result of fire, parking area can be easy to get to get away to open space.



WHAT WORKS WELL:

DESIGN 4 –

- Welcoming stage position
- Toilets are now separate from the bar area.

DESIGN 5 –

- Box office at entrance to control numbers entering the site.
- Display seen at end when leaving.
- Toilets one side of bar.

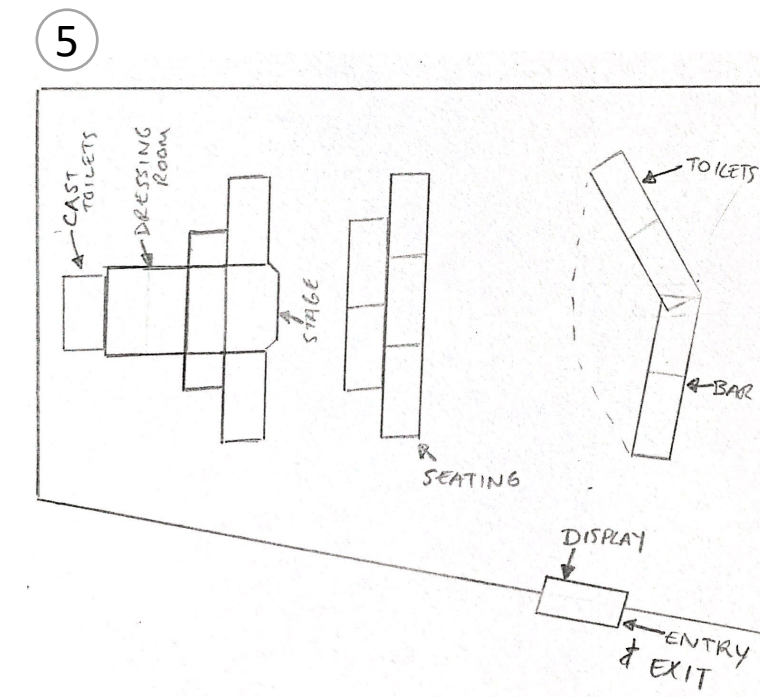
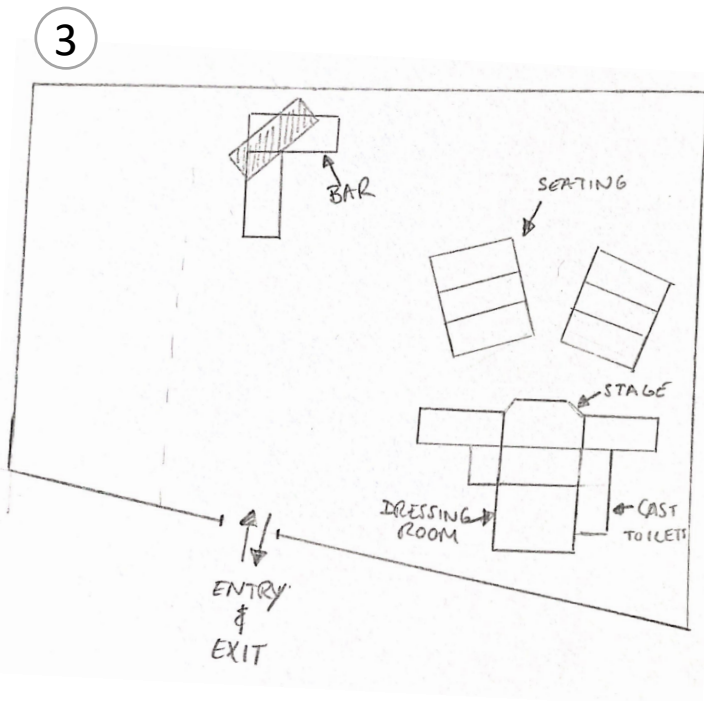
WHAT DOESN'T WORK WELL:

DESIGN 1

- All looks to be in one line.
- All positioned at back of site.

DESIGN 3

- All positioned at back of the site.
- One entry doesn't work well for COVID-19.
- Seating area doesn't fit regulations.
- Too much open space as you walk in.
- All looks to be in one line.



WHAT DOESN'T WORK WELL:

DESIGN 4 –

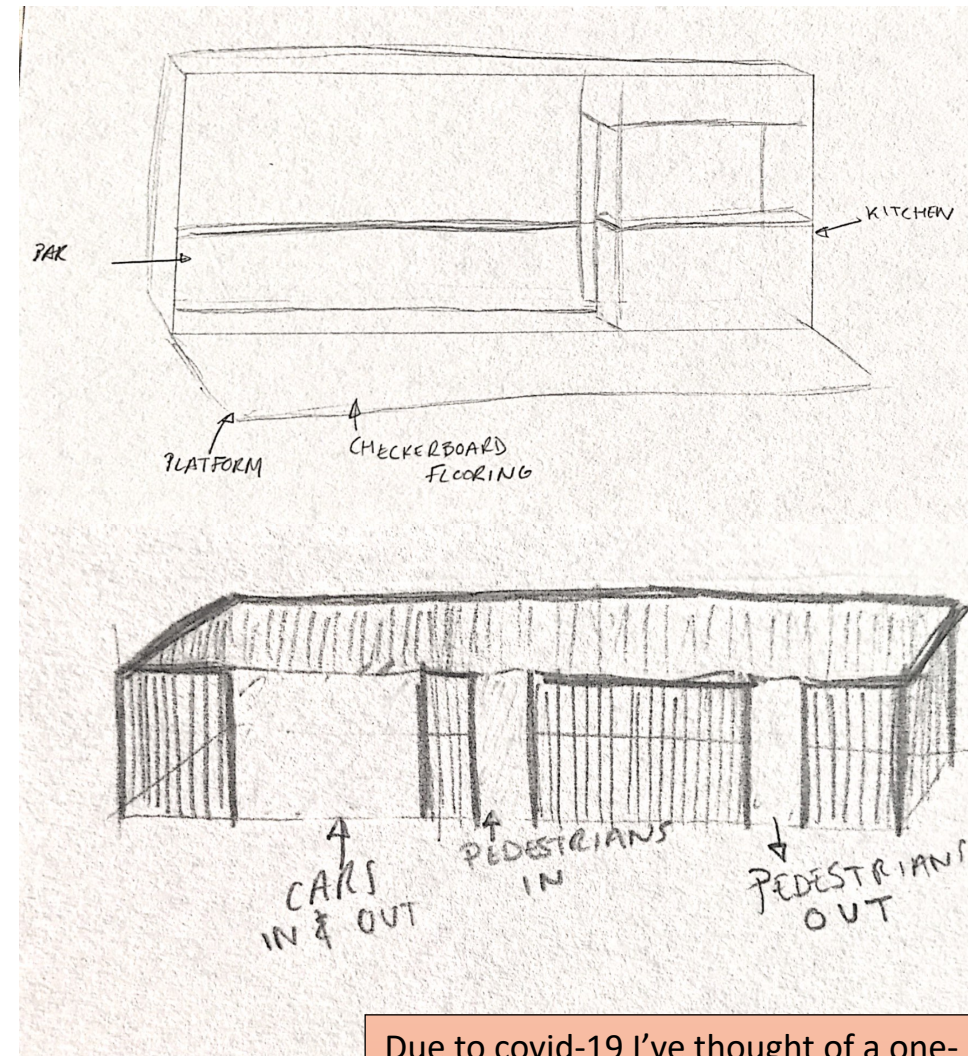
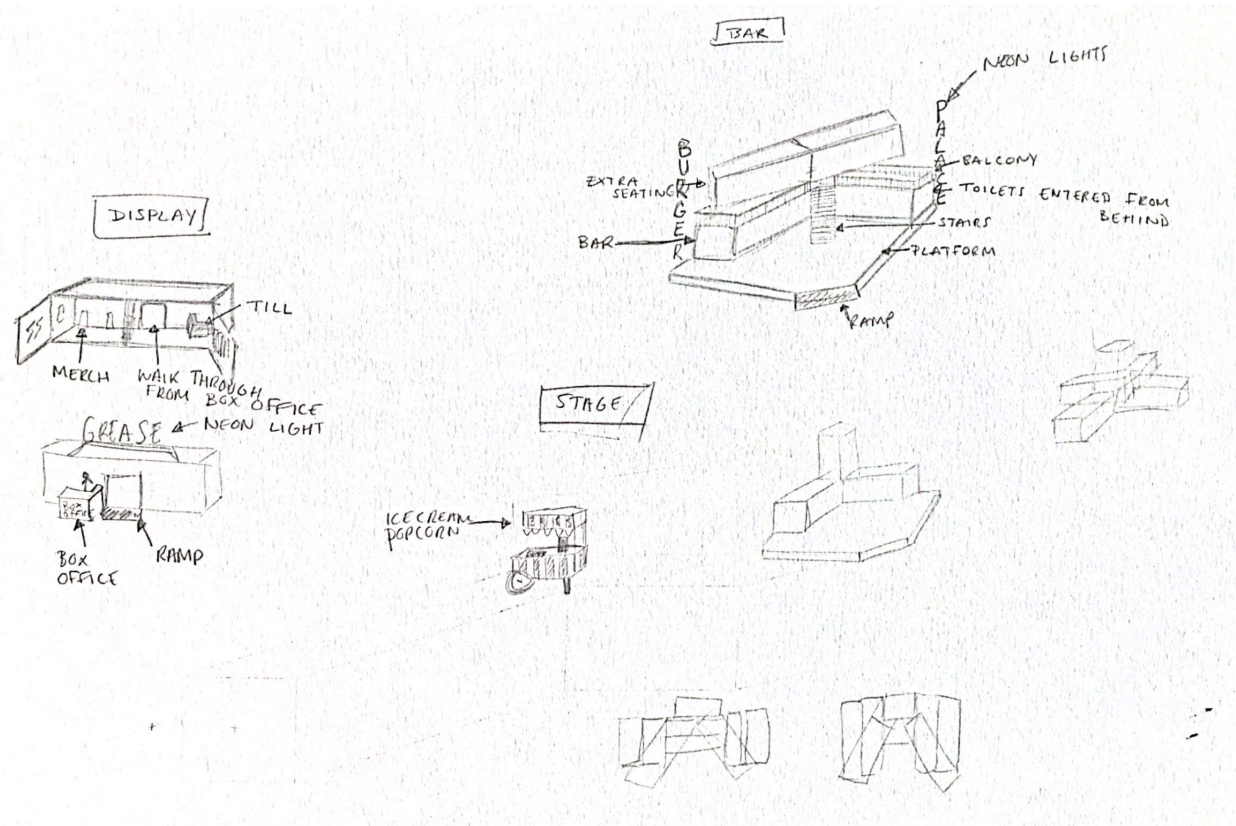
- Seating could have walkway so its more assessable.
- Toilets possibly to far away from seating area.

DESIGN 5 –

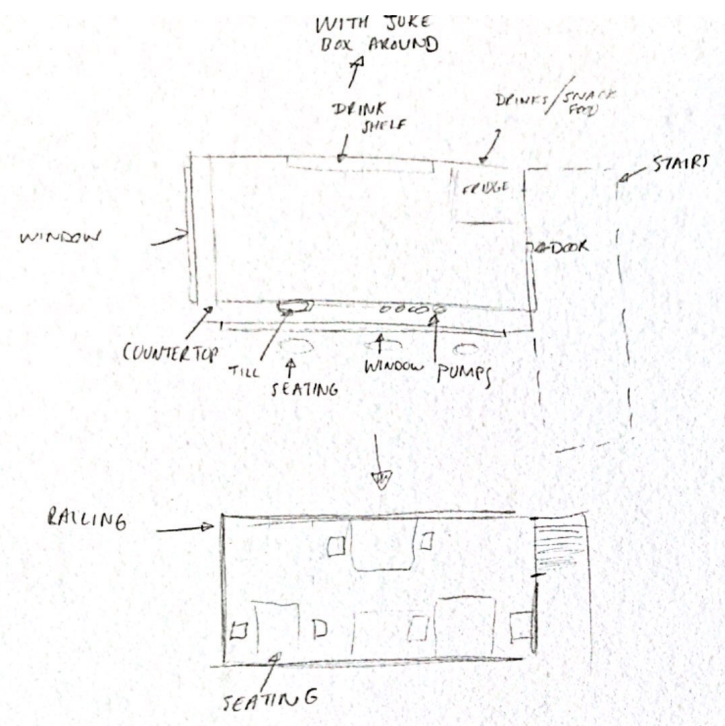
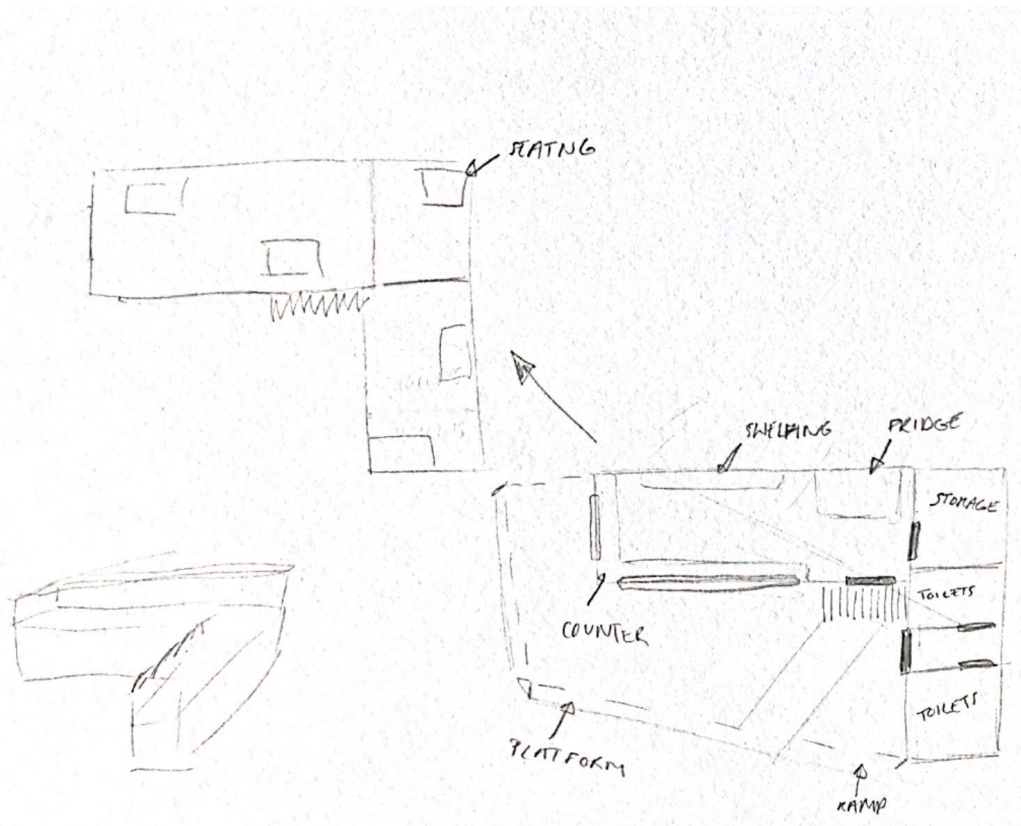
- Set up doesn't feel approachable.
- Sides haven't been thought thoroughly.

VISUALS

- BAR & DISPLAY DESIGNS -

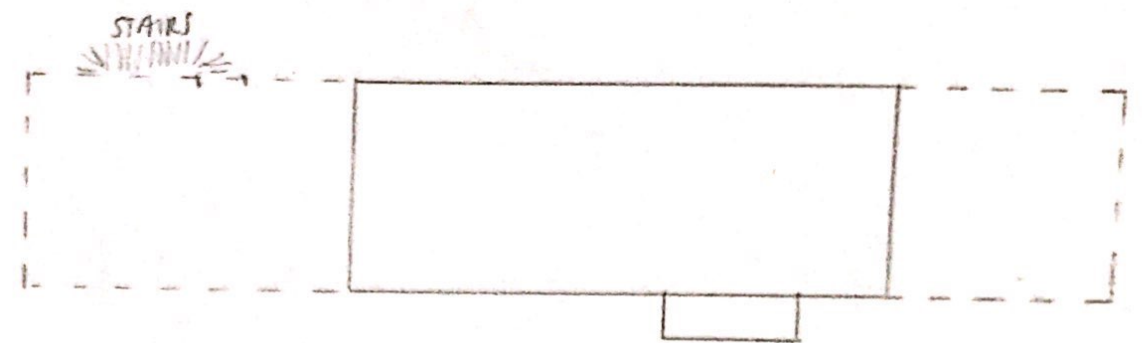
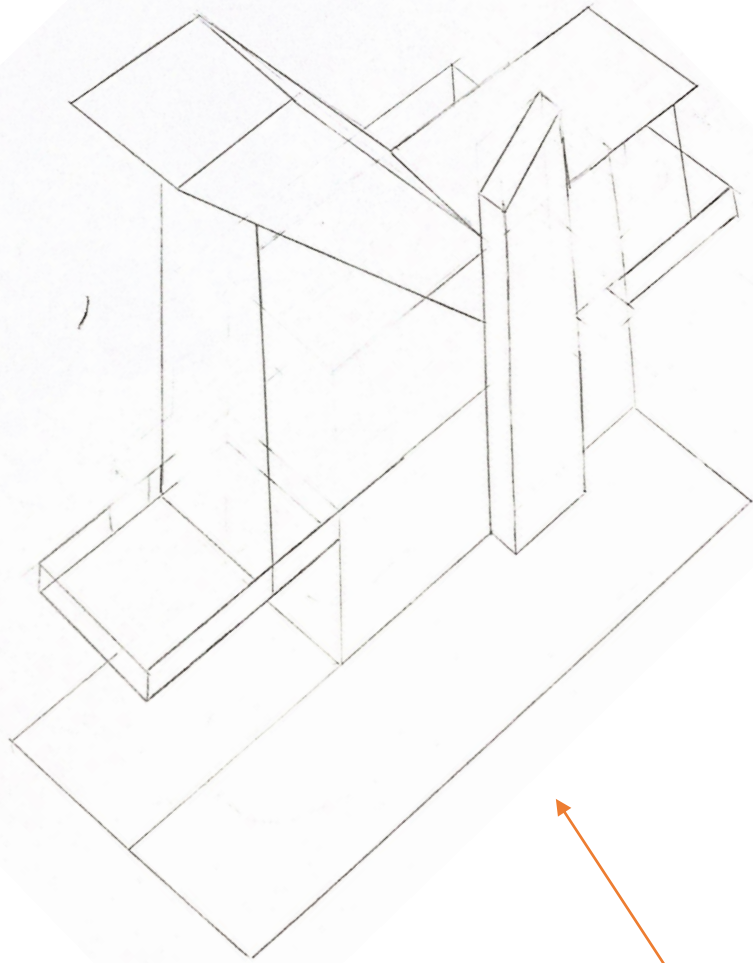


Due to covid-19 I've thought of a one-way system where customers. One being entrance only and the other being exit only. I've also thought about if there was on site parking then there would also be an additional entrance for just cars only.

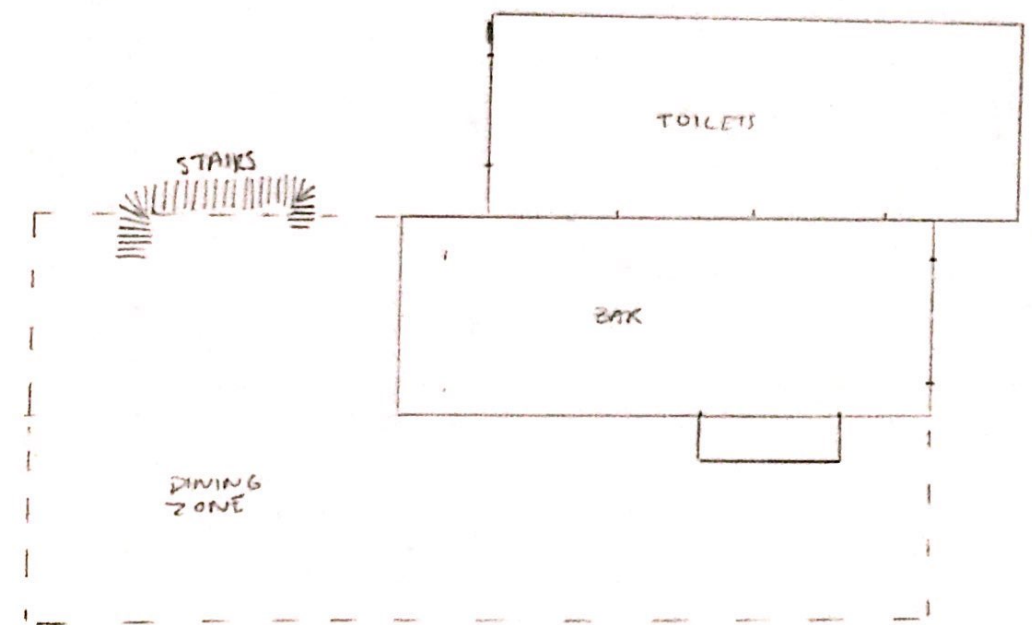


VISUALS

- BAR & DISPLAY DESIGNS -

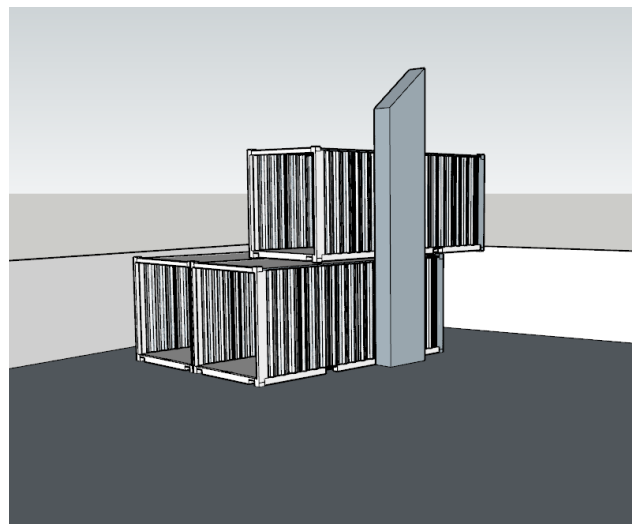


FIRST FLOOR



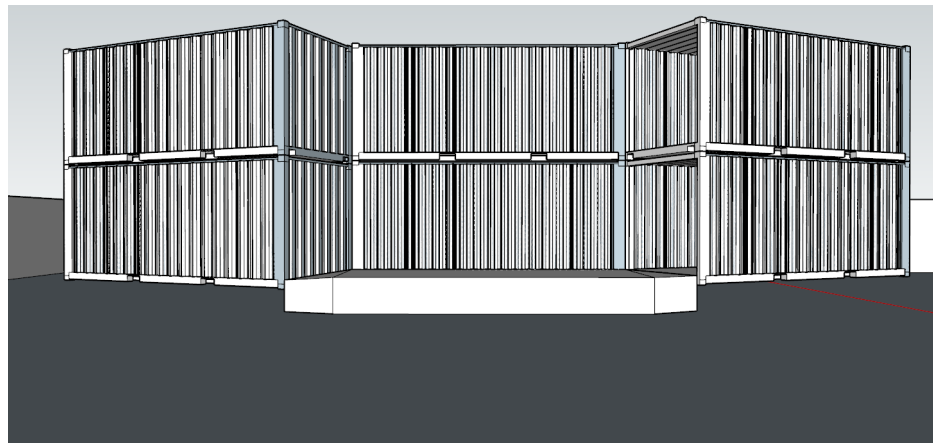
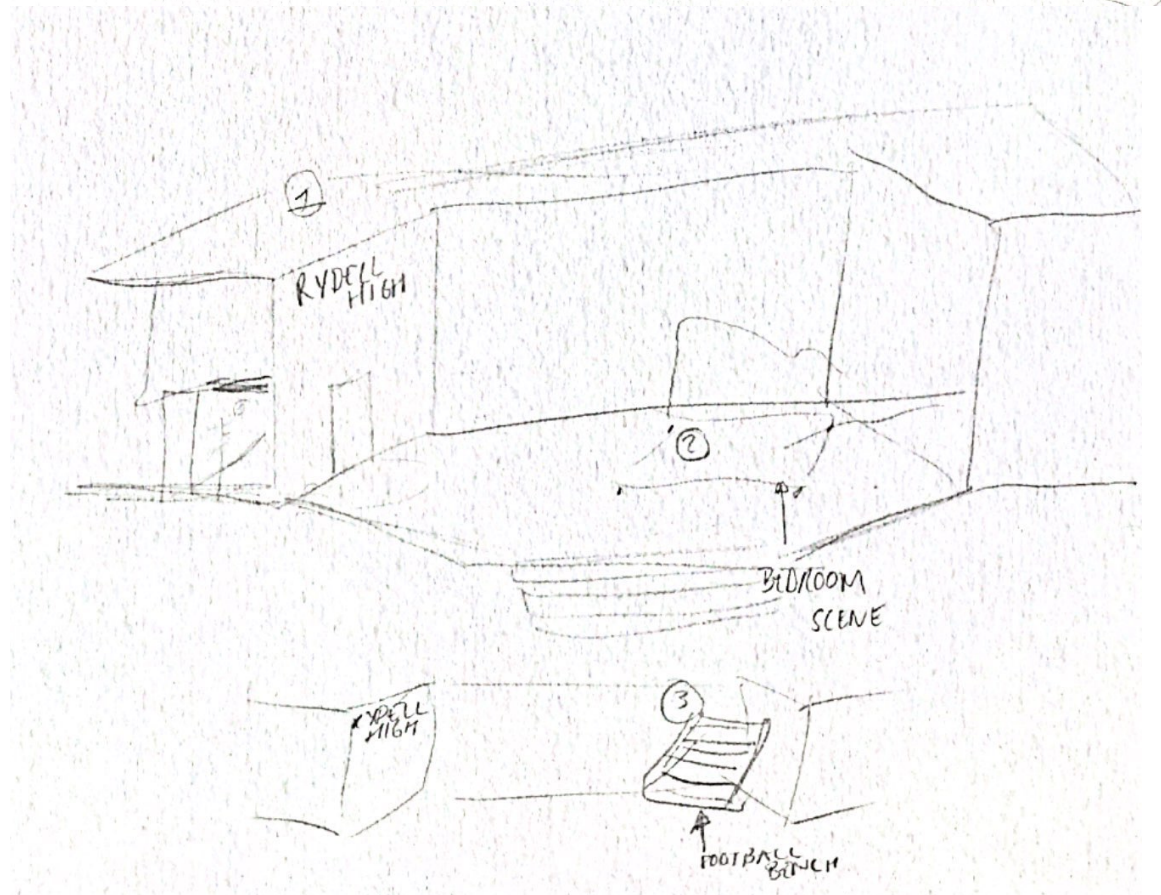
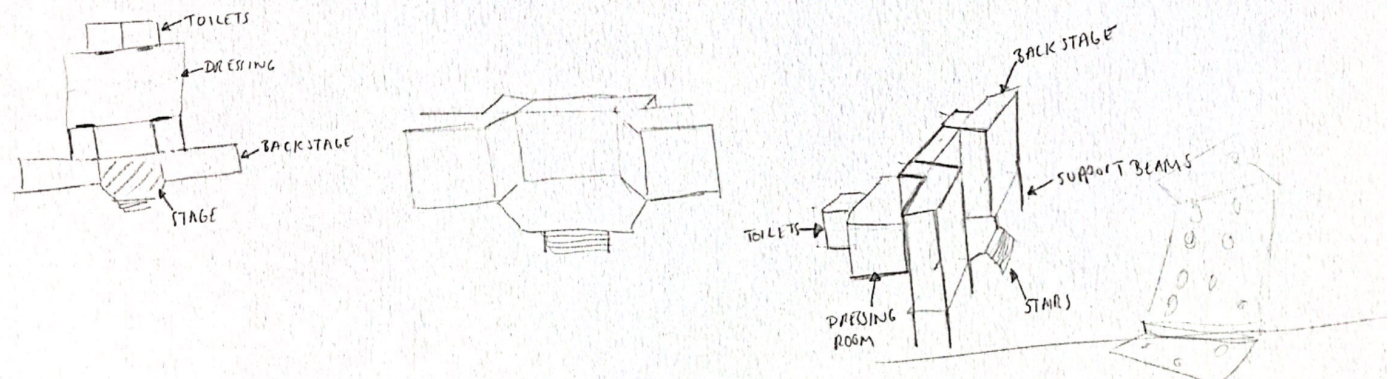
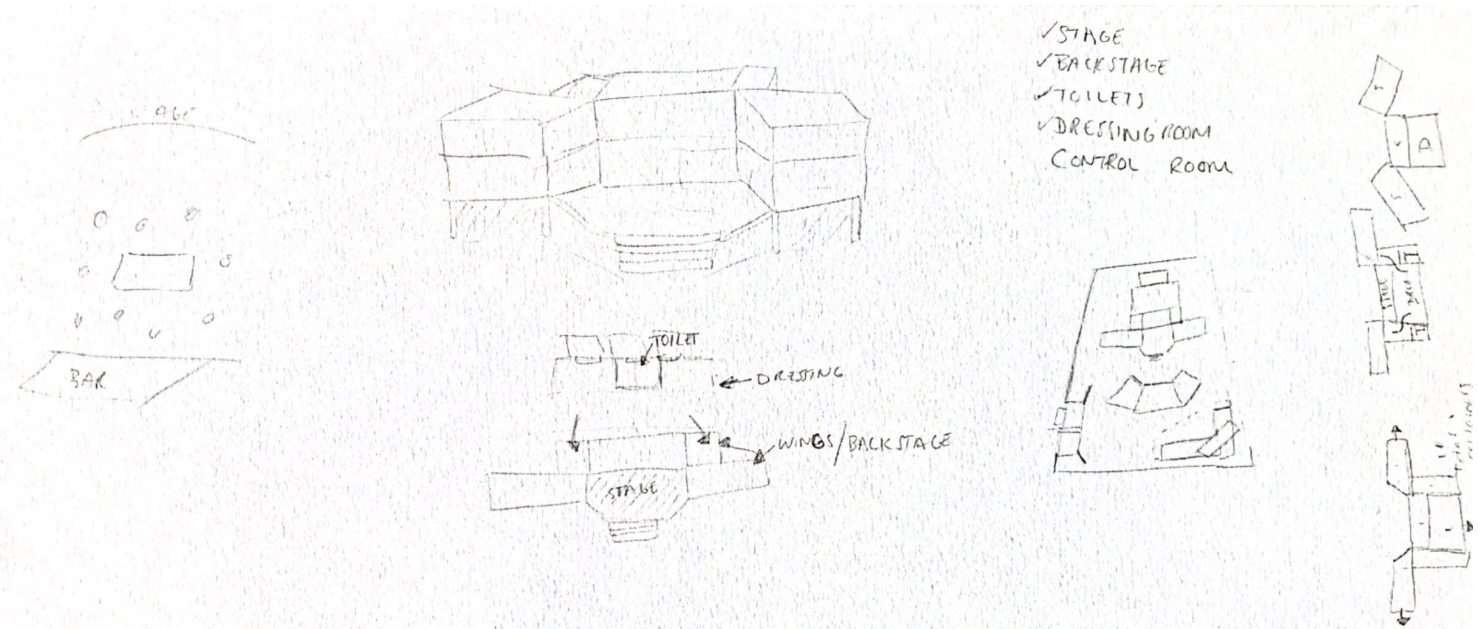
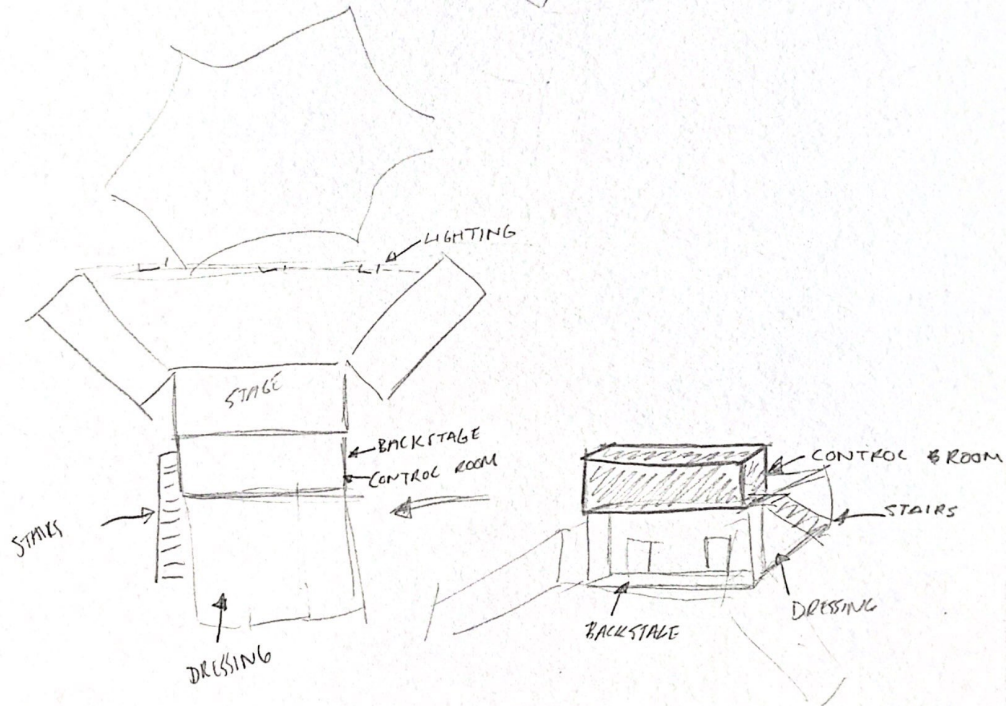
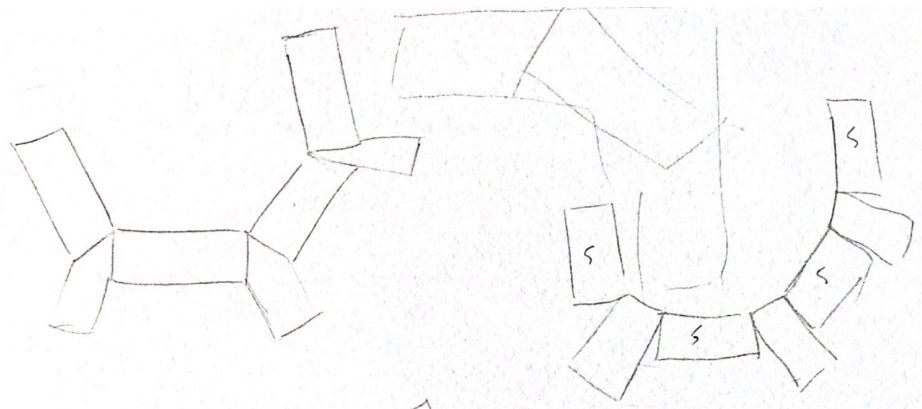
GROUND FLOOR

Rough example as to how many containers will be needed (3) to create the shape where parts of one container will have sections taken out from it.

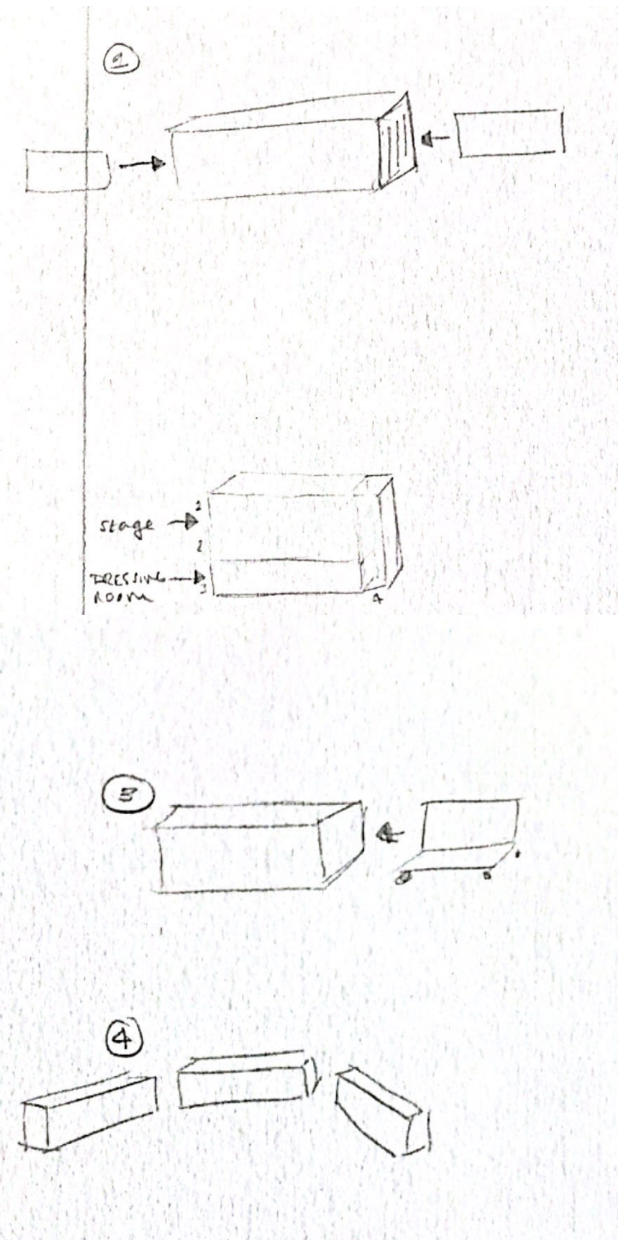
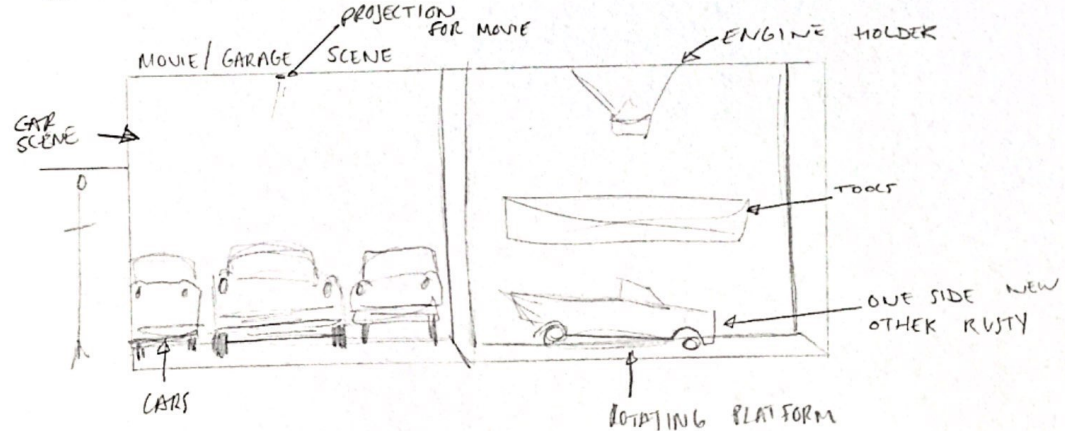
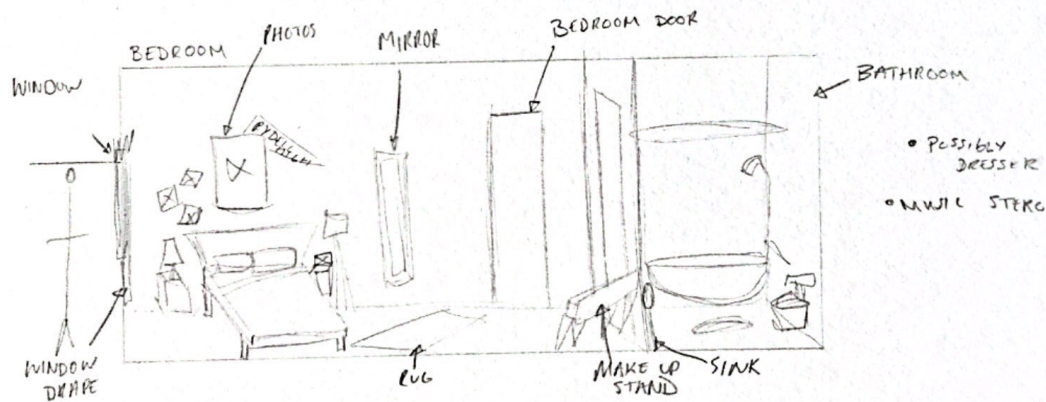
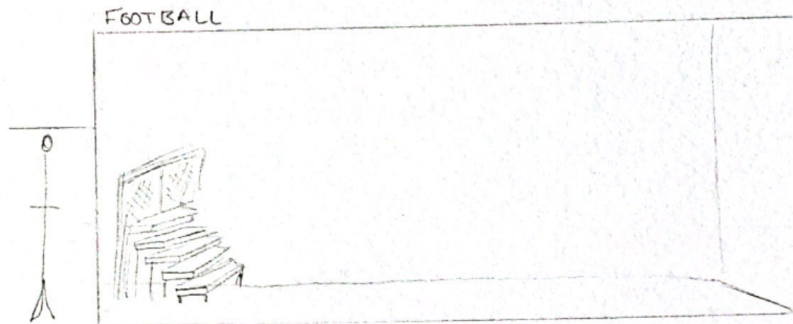
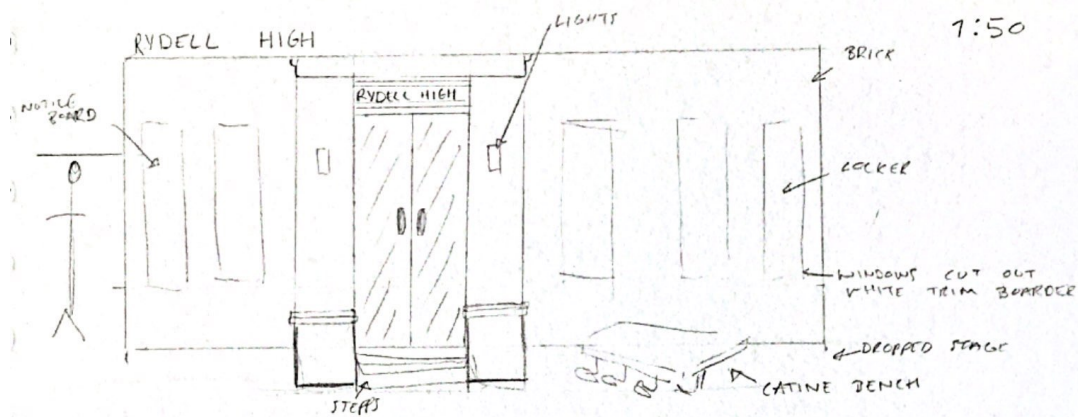


Main material would be wood to soften the approach, but paint with bright colours with possible patterns on to fit in with theme.

VISUALS - STAGE DESIGNS -

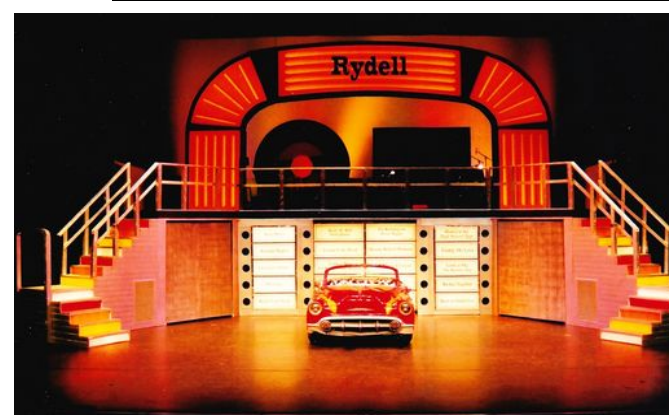
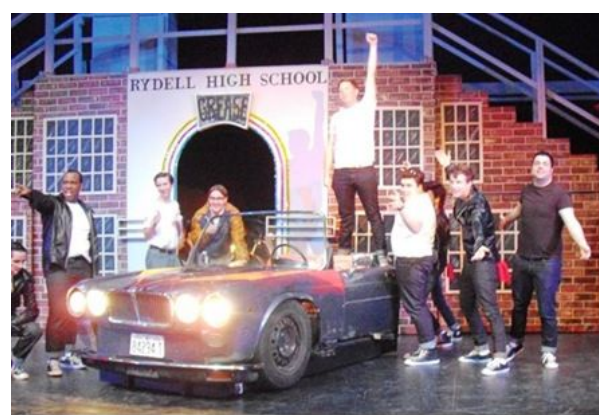
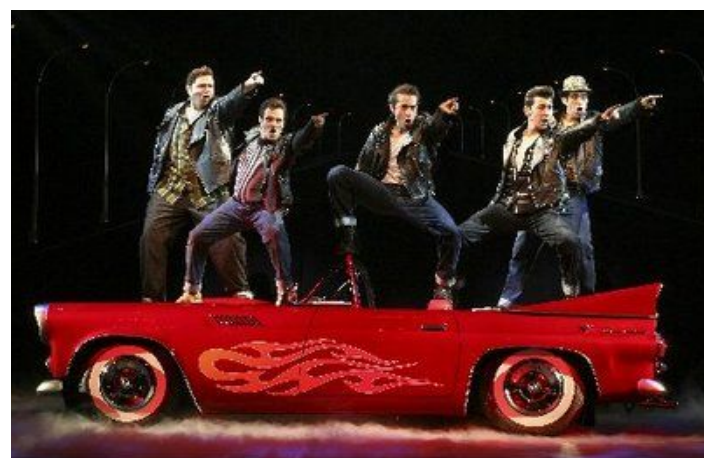
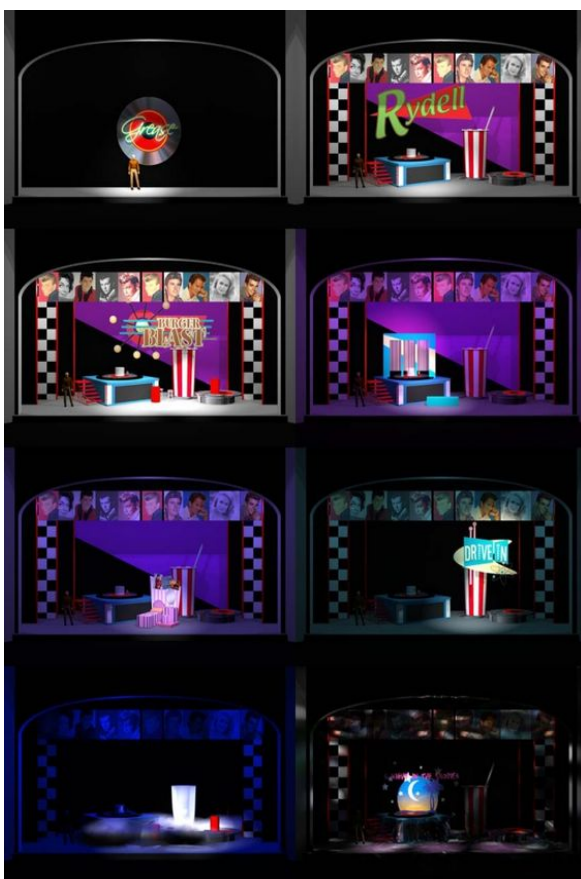


SKETCHES - SET DESIGNS -



- TYPES OF STAGES**
- Proscenium
 - Thrust
 - Theatre in-the-round
 - Arena theatres
 - Black-box or studio theatres
 - Platform stages
 - Hippodromes
 - Open air theatres
 - Site specific
 - Promenade

PRECEDENT STUDY/INSPIRATION - GREASE SET DESIGNS -



PRECEDENT STUDY/INSPIRATION - 1950's BAR DESIGNS -



PRECEDENT STUDY/INSPIRATION - TEXTURES, MATERIALS, LIGHTS -



1950s Fashion Colors

Spring/Summer



Autumn/Winter



VintageDancer.com/1950s

