



EXPOSURE

THE GRANARY

ADZ6888

Rebecca Chick

st20139007

Blog Address: rebeccachick.home.blog






TABLE OF CONTENTS

DETAILED DESIGN BRIEF	1
HOST BUILDING ANALYSIS	2-4
ACCOMMODATION SCHEDULE	5
KEY MOVE DIAGRAMS	6-7
BUBBLE DIAGRAMS	8
ZONED PLANS	9-10
PRECEDENT BOARDS	11-14
DESIGN DEVELOPMENT	15-16
MODEL	17
PLANS	18-19
ELEVATIONS	20-21
SECTIONS	22
ISOMETRICS	23
MICROTECTONICS	24
VISUALS	25-29



BRIEF

VENUE: The Granary, Croesllanfro Gardens, Rogerstone, NP10 9LH

PROJECT: Wedding Venue/Ceremony with Accommodation

The Granary is an empty skeleton barn for most of the year with occasional use as an indoor tennis court. It overlooks scenic views which would be perfect to redesign into a wedding venue/ceremony with accommodation where celebrations and photographs can take place.

The design theme of the Granary is best fitted to be a rustic barn house to correspond to the farmhouses on the site plan but also the Granary's building features. Accents of colour are incorporated into the design to fit with the client's colour scheme.

By redesigning the Granary, it would be suitable for any couple who wish to have their wedding at this location. However, if the wedding season is slow it can be used for functions e.g., birthdays, fundraisers and a self-contained holiday home.

Project goals

1. Redesign the Granary into a functional wedding venue/ceremony with accommodation for all disabilities e.g., toilets and ramps.
2. Design two honeymoon suites so that it's accessible for users with disabilities so they can have the same luxuries.
3. The option to have the wedding ceremony indoors or outdoors depending on the weather.



HOST BUILDING ANALYSIS

SURROUNDINGS OF SITE AND EXTERIOR FEATURES OF BUILDING

Red route route indicates the main road which leads to other main road routes. The green and magenta routes lead to the access points to the building.



The overall building is designed as a barn and the use of stone walls and wooden structure beams gives that impression. It has floor to ceiling windows/doors (lots of daylight front & back of building) and has a refurbished slate roof.

When walking to the building there are pavements with dropped curbs (accessible for wheelchairs and pushchairs). Speed bumps built into the road forces slow driving for pedestrian safety. Whilst the road is fairly quiet it is a well lit area at night due to lots of streetlamps.



Garden show every year for charity by the Croesllanfro farm (owners of the barn). Also surrounded by beautiful scenery beyond the site location giving perfect viewpoints to look out on and a prime location for photographs to be taken.



Small parking access on site, 3 spaces in the car port with 2 extra spaces at the back of the barn on the private road. There is additional parking on the grounds of the site.



Yellow represents the whole site that the owners own. The red line represents the building that I am redesigning.

There are three possible access points to access the site which have been shown in a dark blue ring. These points can be accessed directly either by car, bicycle and walking.

Nearest bus route is shown in cyan on Ruskin Avenue. A dark blue ring shows the nearest bus stop (less than a 5 minute walk from building)



HOST BUILDING ANALYSIS

INTERIOR FEATURES OF BUILDING



Following the consistency of the exterior of the barn, the interior also suggests the feeling of a barn cottage due to the wooden structure beams above the floor to the ceiling windows and into the roof.



The barn is an empty skeleton that has no lighting or heating installed. The owners have also painted the original stone walls a cream colour but my design will revert it to the original stone feature to fit with the rustic theme.

The interior of the barn isn't welcoming, it is not decorated as its not being lived in or used. However, it does have a strong roof structure which has recently been renewed so there are no concerns for roof leaks or structure damage.

Due to the floor to ceiling windows/doors and extra windows throughout the barn, it creates a lot of natural light throughout the building. Artificial lighting will only be used towards the end of the day.



The owners have already decorated and repurposed the interior by temporary transforming it into a tennis court for their grandchildren. They also use it as a party venue for their family.

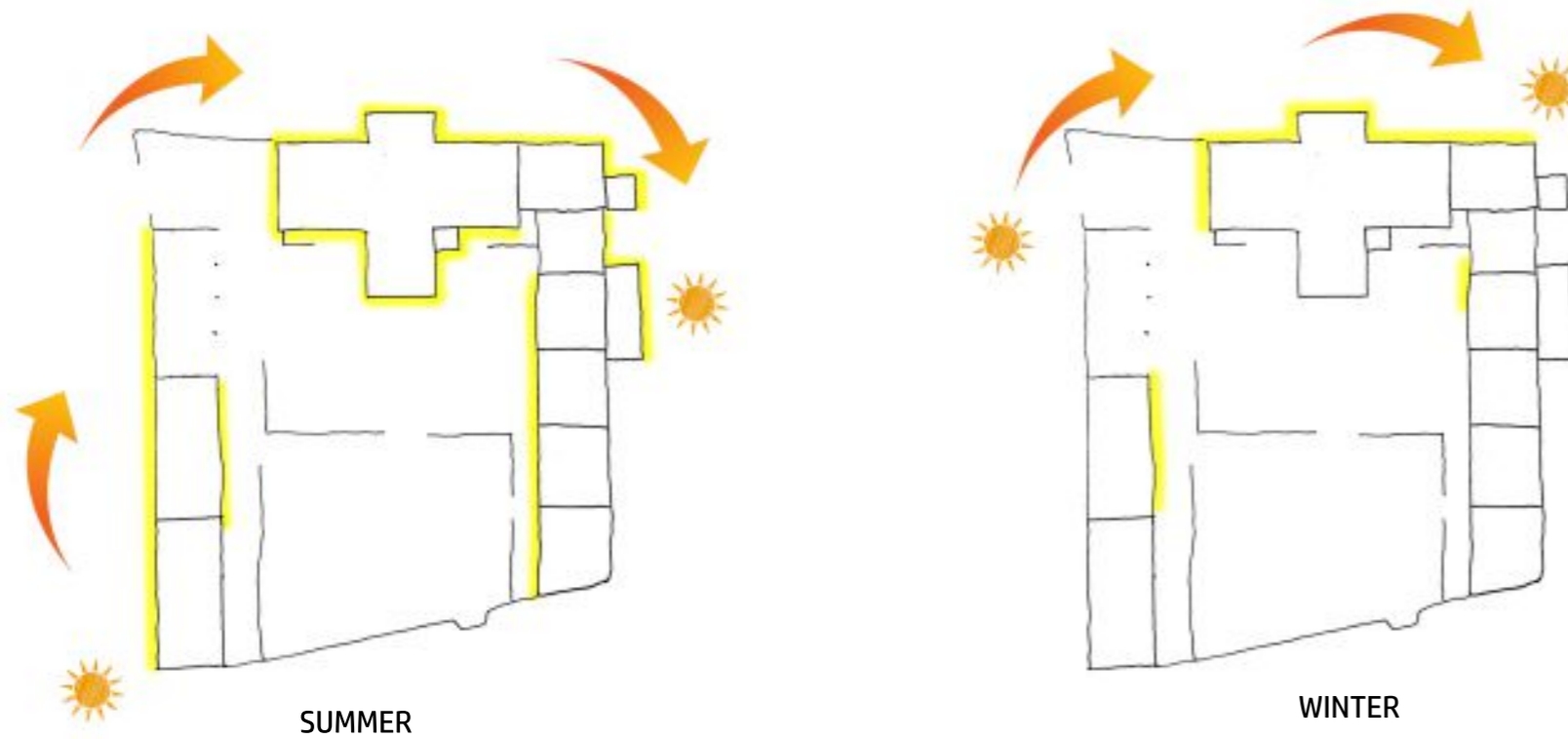
The main barn structure has four entry points and the scope to have two floors.

SUN PATH ANALYSIS: The Granary, Rogerstone

The sun path diagrams indicate the areas of the Granary site plan that receives the most sunlight throughout the 3 different months highlighted. By understanding the sun path of this building site, it allows my design to achieve it's potential. It also enables me to check if the interior will receive enough natural sunlight for my design or whether I need to add more windows to the building or change my design layout.

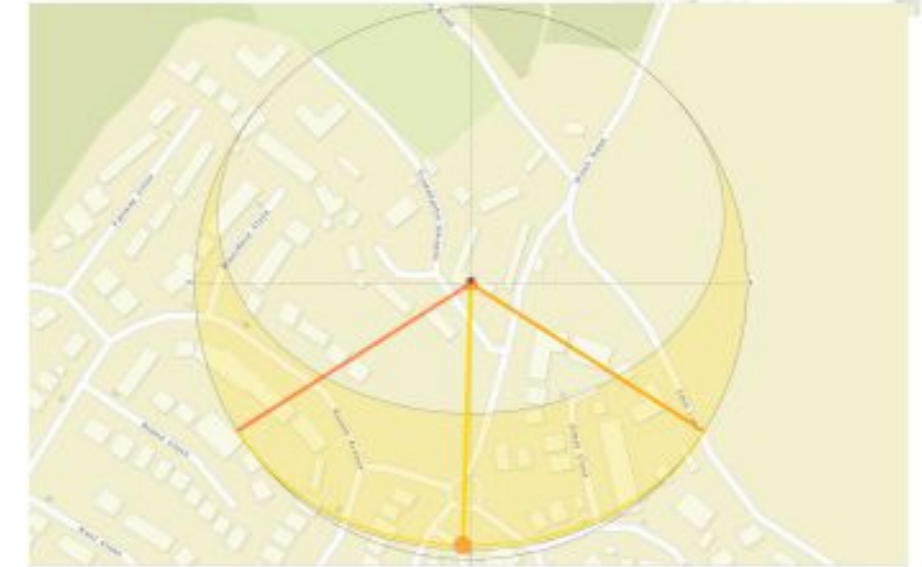
- Maximum sunlight is received throughout the day at the back of the barn, except in the summer where the sun shines at the front of the barn in the mornings.
- The right side of the barn also gets some sunlight at sun rise, where the left side receives sunlight at sun set.
- Overall, even through the barn receives significant sunlight the barn will also need to have artificial lights installed to illuminate the building so that guests are able to see their surroundings for safety. but also because its a large barn that has never had any ceiling lights in it before.

The site layout indicating in more detail where on the building sun will hit.
Not to scale



The diagrams above show a digital drawing which focuses on where the sun path shines on the building. This gives a rough representation on where the sun will be most effective and if my design will receive enough natural sunlight.

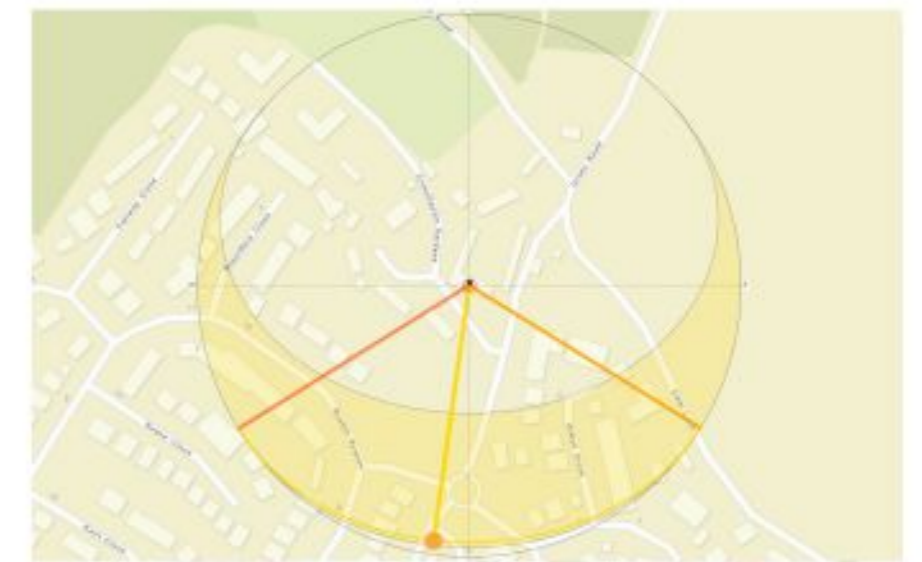
20th January 2020 - 12:30pm



20th June 2020 - 12:30pm



20th November 2020 - 12:30pm



ACCOMMODATION SCHEDULE

ACTIVITIES NEEDED FOR A WEDDING VENUE/CEREMONY WITH ACCOMMODATION:

DINING AREA - Table and chairs for the guests of the wedding to have their 3 course meals.

DANCE FLOOR AREA - So that groom and bride and their guests can celebrate throughout the special day.

REFRESHMENTS AREA - A mini bar area that provides beverages and soft drinks to the guests.

KITCHEN AREA - Where the 3 course meal will be prepared for the guests.

TOILETS - So that guests can use whilst also making sure there accessible.

STORAGE - Where the tables, chairs and decorations are stored during the ceremony but also when the wedding is over.

CAKE STATION - Where the groom and bride will display their wedding cake and other sweets for the guests and their children.

BEDROOMS - Accommodation for the bride and groom to get ready for their big day but also to stay over night with close family.

CEREMONY AREA - For the bride and groom to take their vows with their guests to watch.

KIDS PLAY AREA - For the guests children to go off and play so that they aren't bored whilst also for the adults to enjoy themselves more.

EXTRA ACTIVITIES:

LOUNGE AREA - Where guests can sit and relax whilst also enjoying the wedding celebrations.

LIVE MUSIC AREA - Depending if the bride and groom want live music.

FUN/GAMES AREA - An area in the wedding where fun games can take place or fun activities such as photo booth etc.

WHAT'S NEEDED FOR OTHER ACCOMMODATION ROOMS:

- Bed
- Bedside Table
- Room Telephone
- TV and Remote
- Rug
- Coffee Table and Lounge Chairs
- Coffee and Tea Station
- Ironing Board
- Books/Magazines
- Clock
- Dresser/Wardrobe
- Bathroom
- Shower/Bath
- Vanity
- Towels/Gowns
- Toilet
- Extra Bathroom Supplies
- Hairdryer and Shaver Port

WHAT'S EXTRA'S ARE NEEDED FOR THE HONEYMOON SUITE:

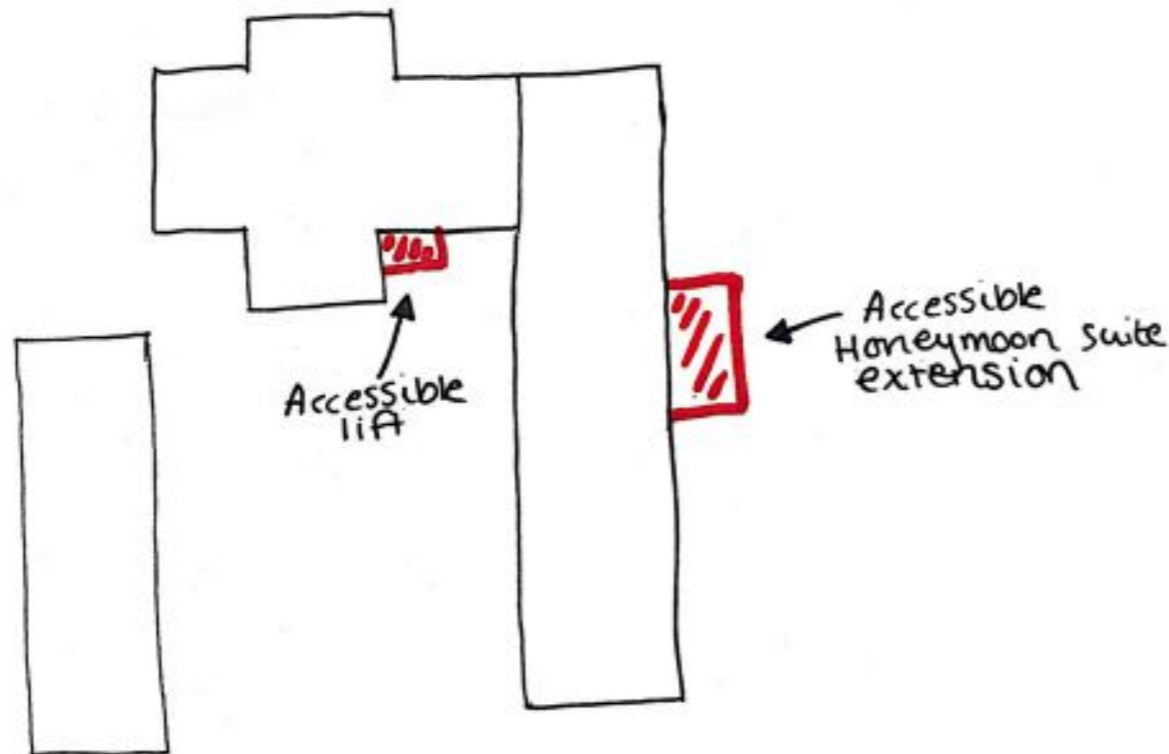
- Champagne
- Fresh Flowers
- Chocolates or Strawberries
- Bathroom including a bath with rose petals in
- Four Post Bed

KEY MOVE DIAGRAMS

NOT TO SCALE

By adding an accessible lift to the side of the barn, it allowed the barn to be accessible for all users. As before someone who is in a wheelchair wouldn't be able to get inside the barn.

By positioning it to the side of the barn it creates quick access to and from the honeymoon suite especially if the bride or groom is coming out of the suite to make a grand entrance to the wedding ceremony

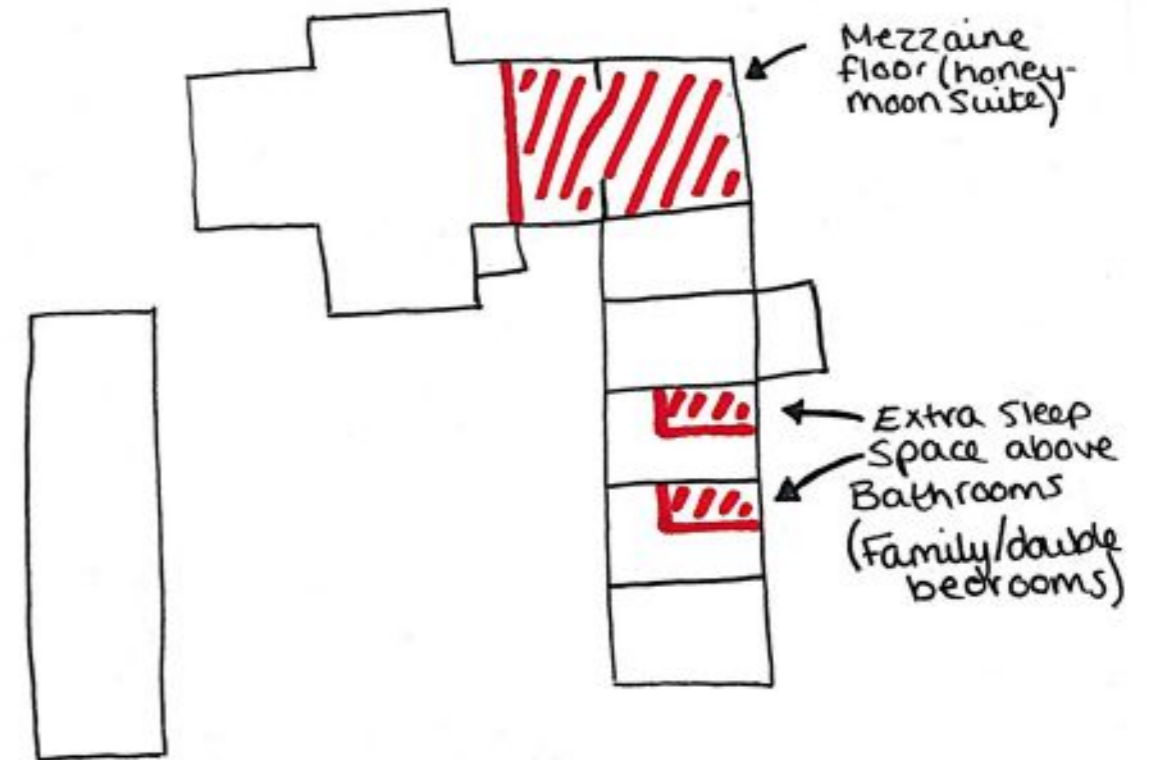


This diagram represents the ground floor showing in red what I have added on to the barn.

By adding an extension onto the accessible honeymoon suite it enables the couple to have the same luxuries to what you would get in the honeymoon suite. It also creates the floor plan for the suite to be bigger allowing more space to move around if someone was in a wheelchair.

By creating a mezzanine floor in the honeymoon suite it gives the option to look over into the barn where all the guests would be due to the Juliet balcony. But also to create a more over spaced floor design.

Connected on the side of the honeymoon suite is a fire exit allowing the couple to make a quick exit, rather than walking back through the barn if there was a fire.

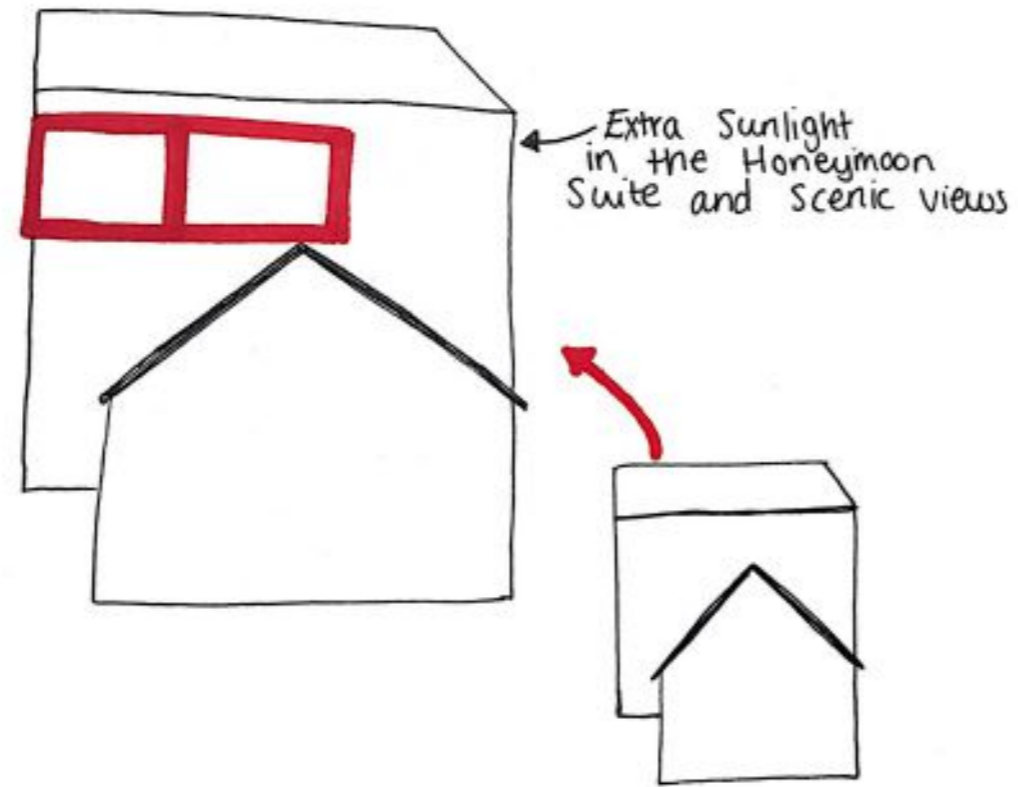


This diagram represents the first floor showing in red where I have added floor levels.

By adding a floor level in the family/double bedrooms it creates more sleeping space for a family to spend the night. But it also gives the option for just two people to stay in the room. Each of the family/double bedrooms can hold up to 4 people.

KEY MOVE DIAGRAMS

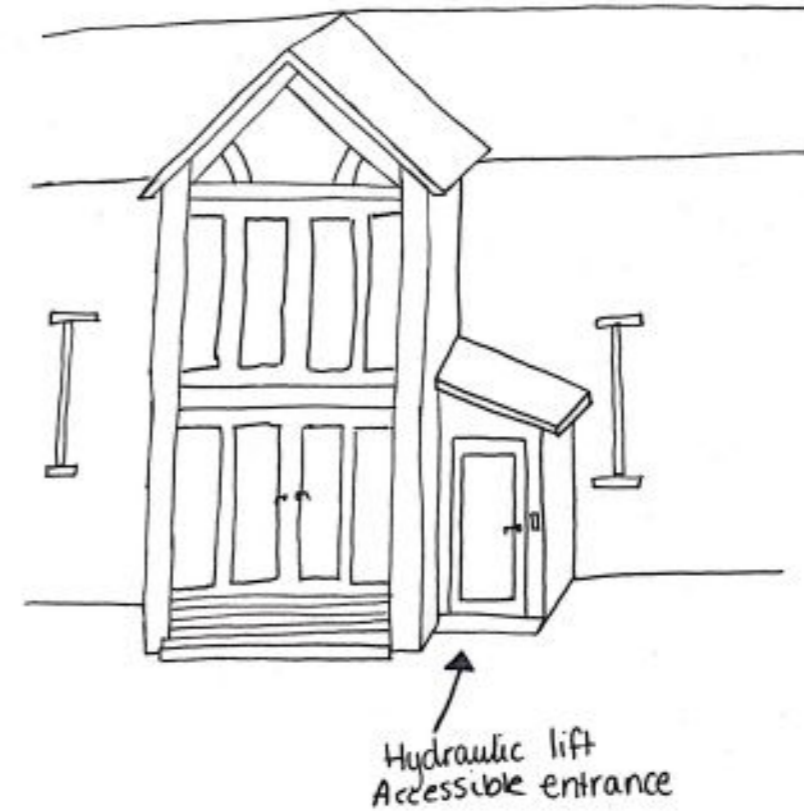
NOT TO SCALE



The diagram represents what the barn originally looked like and what the newly developed design will look like with the windows.

By positioning the windows to the left of the barn it creates the opportunity for the newly-weds to sit in the hot tub and look out from the views or even star gaze. It also creates a nice sitting point inside the barn to just look out of the window which you will be able to see in one of my visuals.

The key importance to adding the windows was also to create more natural sunlight entering into the honeymoon suite to brighten up the dark hallway.



The diagram shows that the accessible entrance will look like making the barn wheelchair friendly.

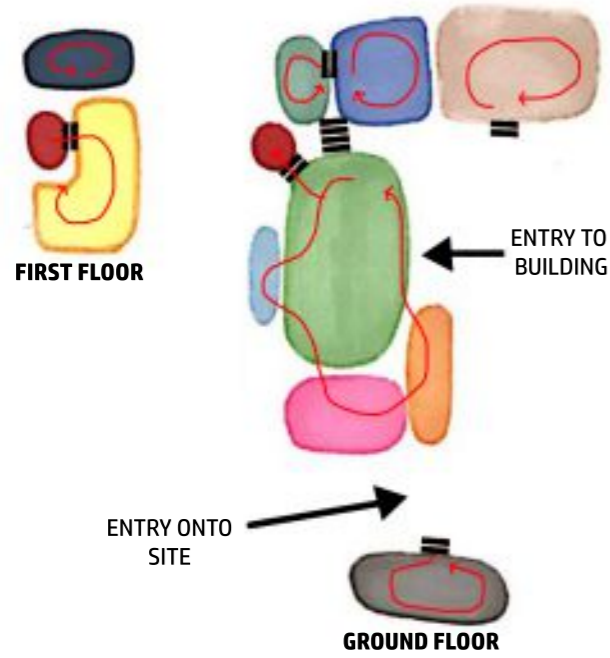
I decided to use a hydraulic lift for the accessible entrance as it would only be taking someone up a few steps. However if it was a whole floor I would have included a lift shaft.

To prevent any water damage to the barn I have designed the roof to have a slight slope so that rain water is able to run on straight onto the ground. Whilst also extruding the roof out slightly to create shelter so the bride or groom don't get wet when getting into the lift when it's raining.

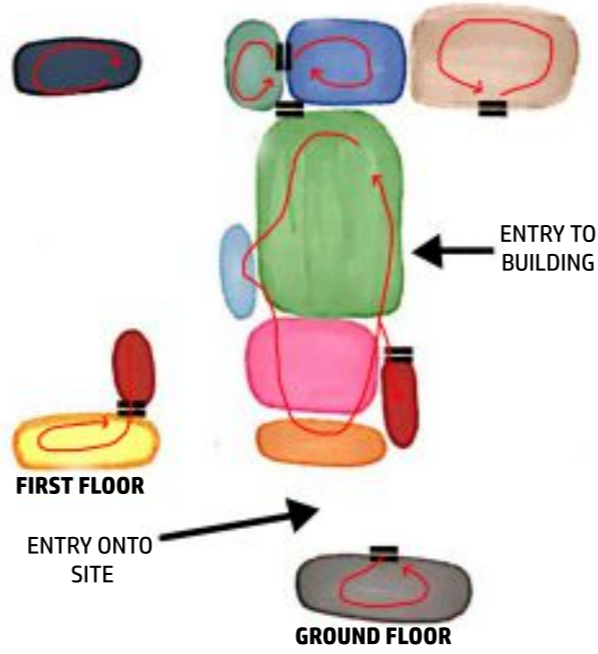
BUBBLE DIAGRAMS

NOT TO SCALE

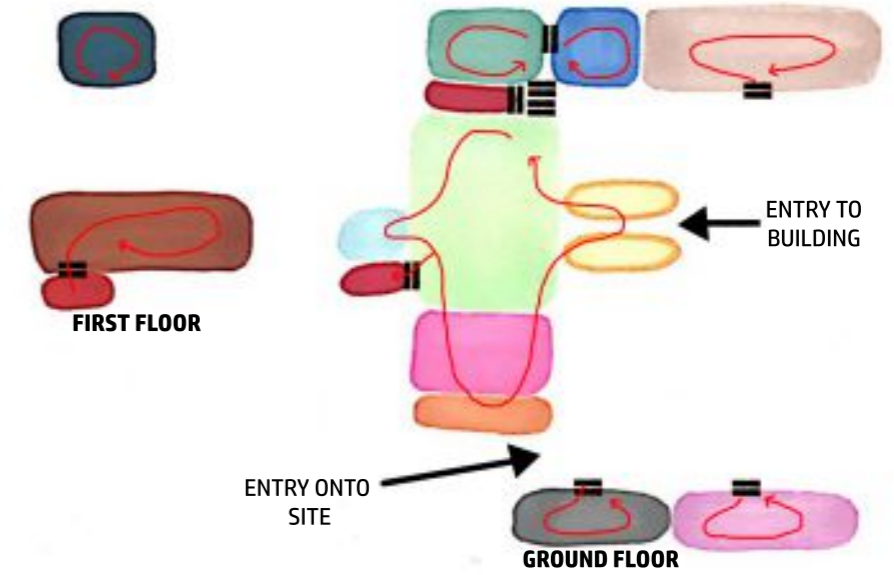
IDEA 1



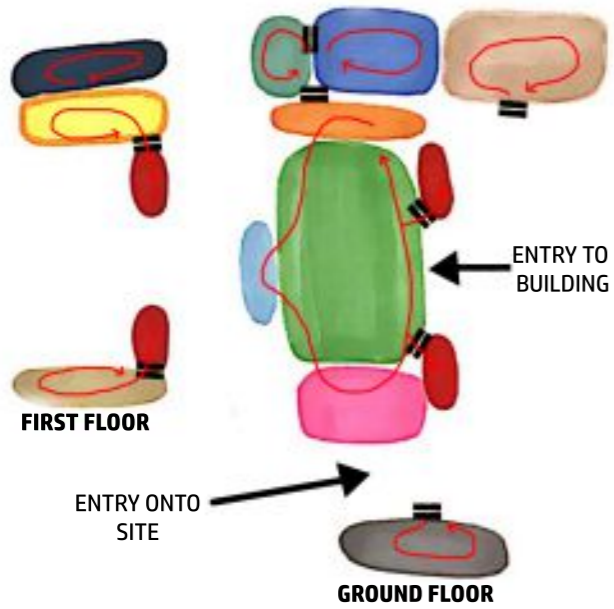
IDEA 3



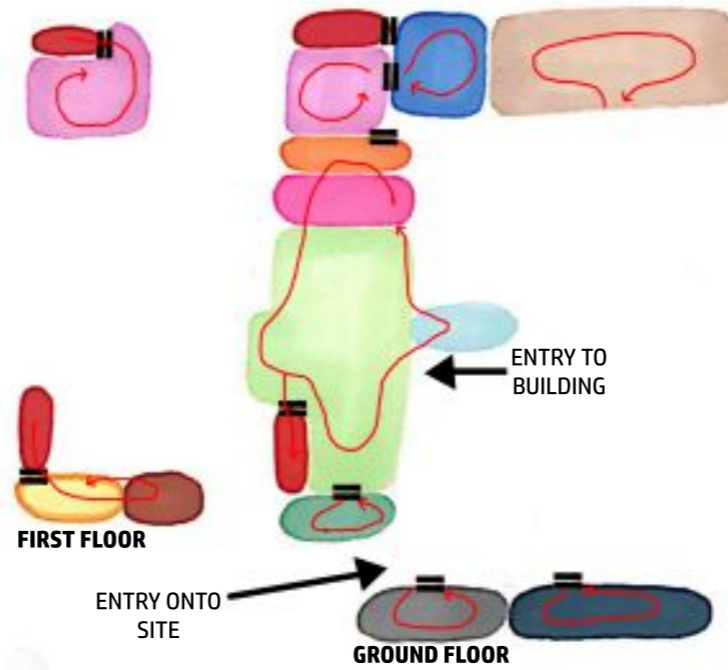
IDEA 5



IDEA 2



IDEA 4



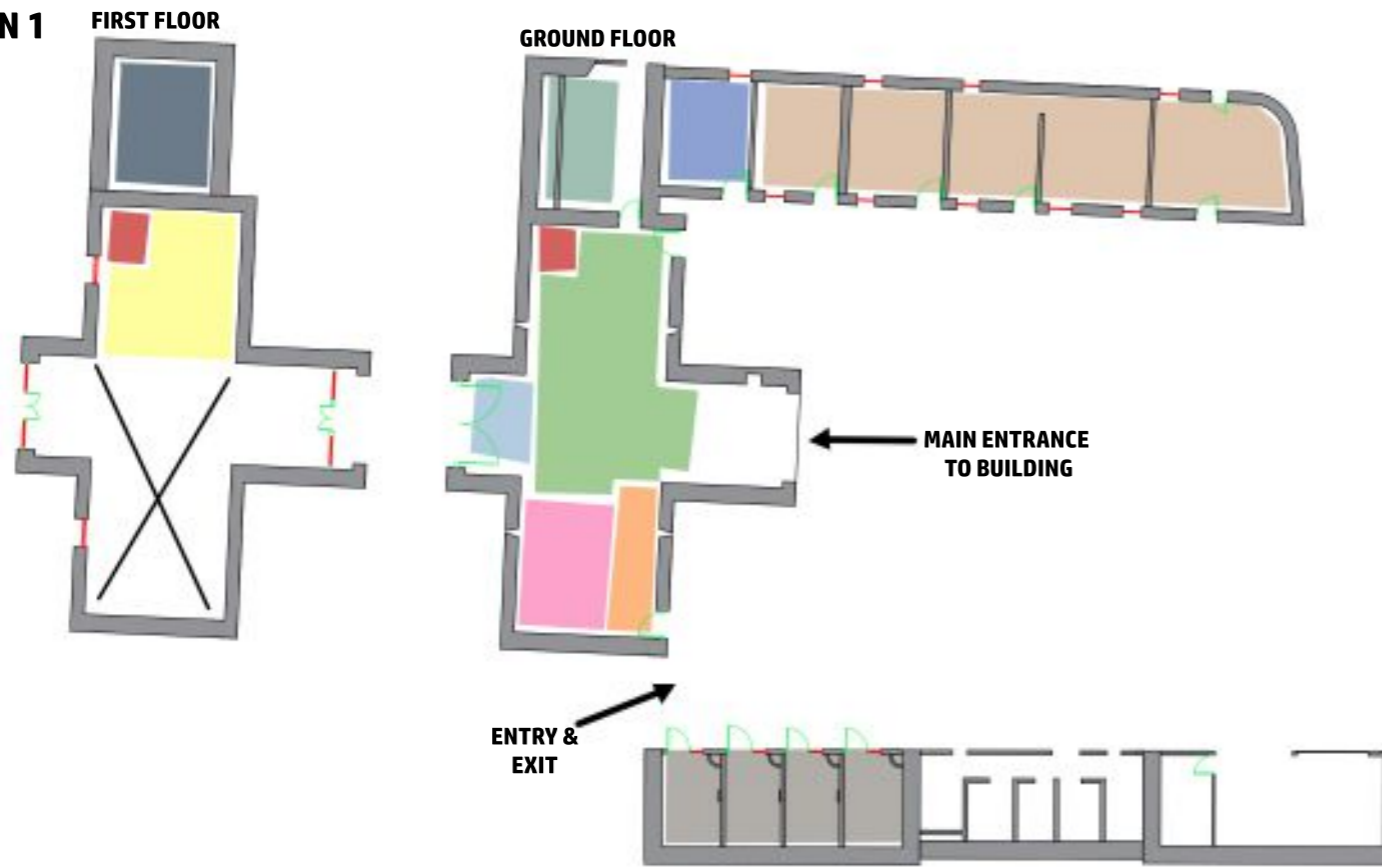
KEY

- CAR PORT
- DANCE FLOOR
- REFRESHMENTS
- DINING AREA
- CAKE STATION
- STAIRS
- TOILETS
- KITCHEN AREA
- LOUNGE AREA
- LIVE MUSIC AREA
- STORAGE
- ACCOMMODATION AREA
- CEREMONY/GAMES AREA
- KIDS PLAY AREA
- SPATIAL CONNECTIONS
- CIRCULATION
- ENTRIES

ZONED PLANS

SCALED 1:200

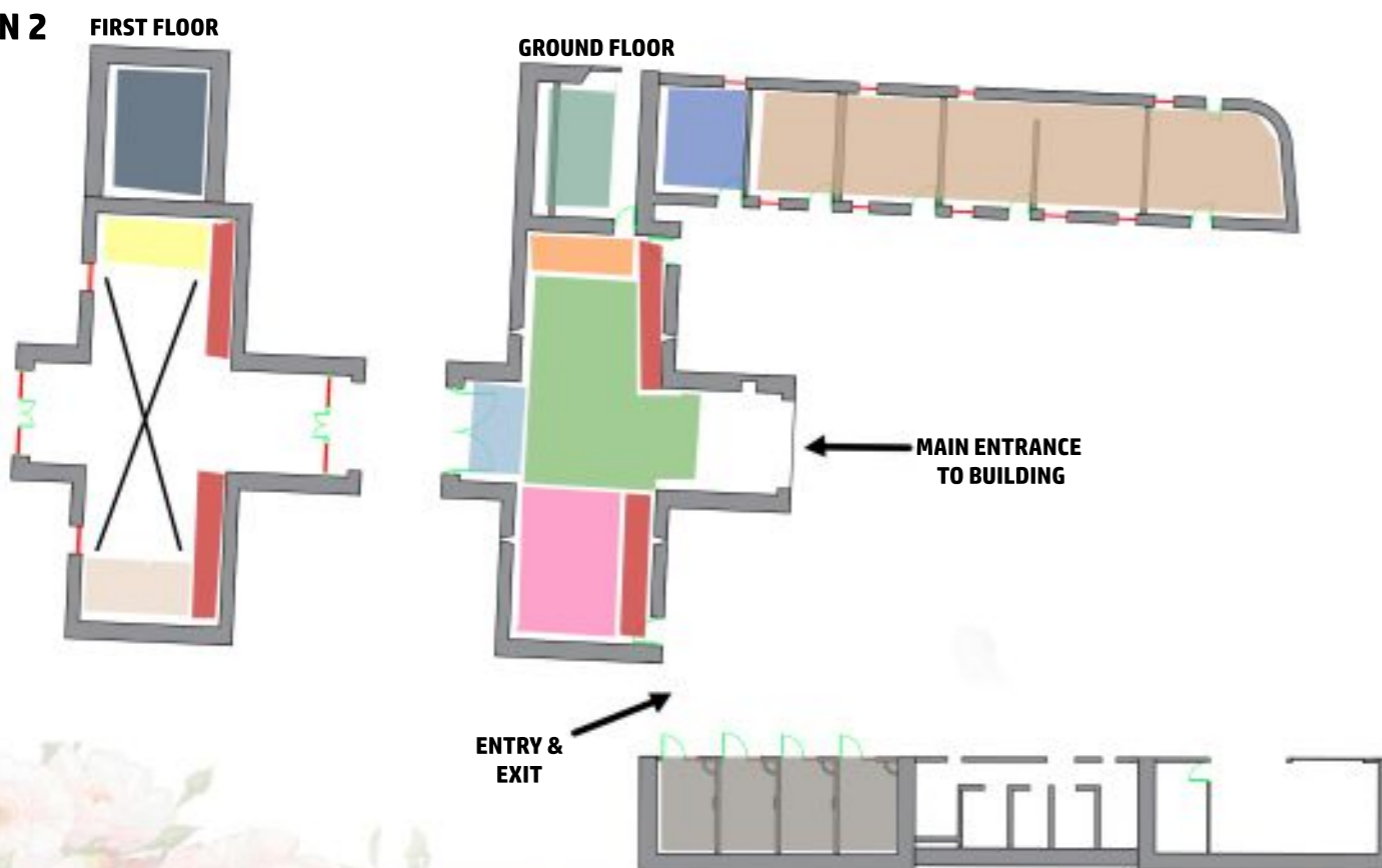
DESIGN 1



By transforming my bubble diagrams onto the existing barn floor layout, I can visualise what walls I would need to remove and those I need to replace with new ones. This will ensure that my design layout is functional for its purpose.

It has also highlighted what areas of my design layouts work and which areas do not. This suggests that some areas need more work for me to reach my final design layout.

DESIGN 2



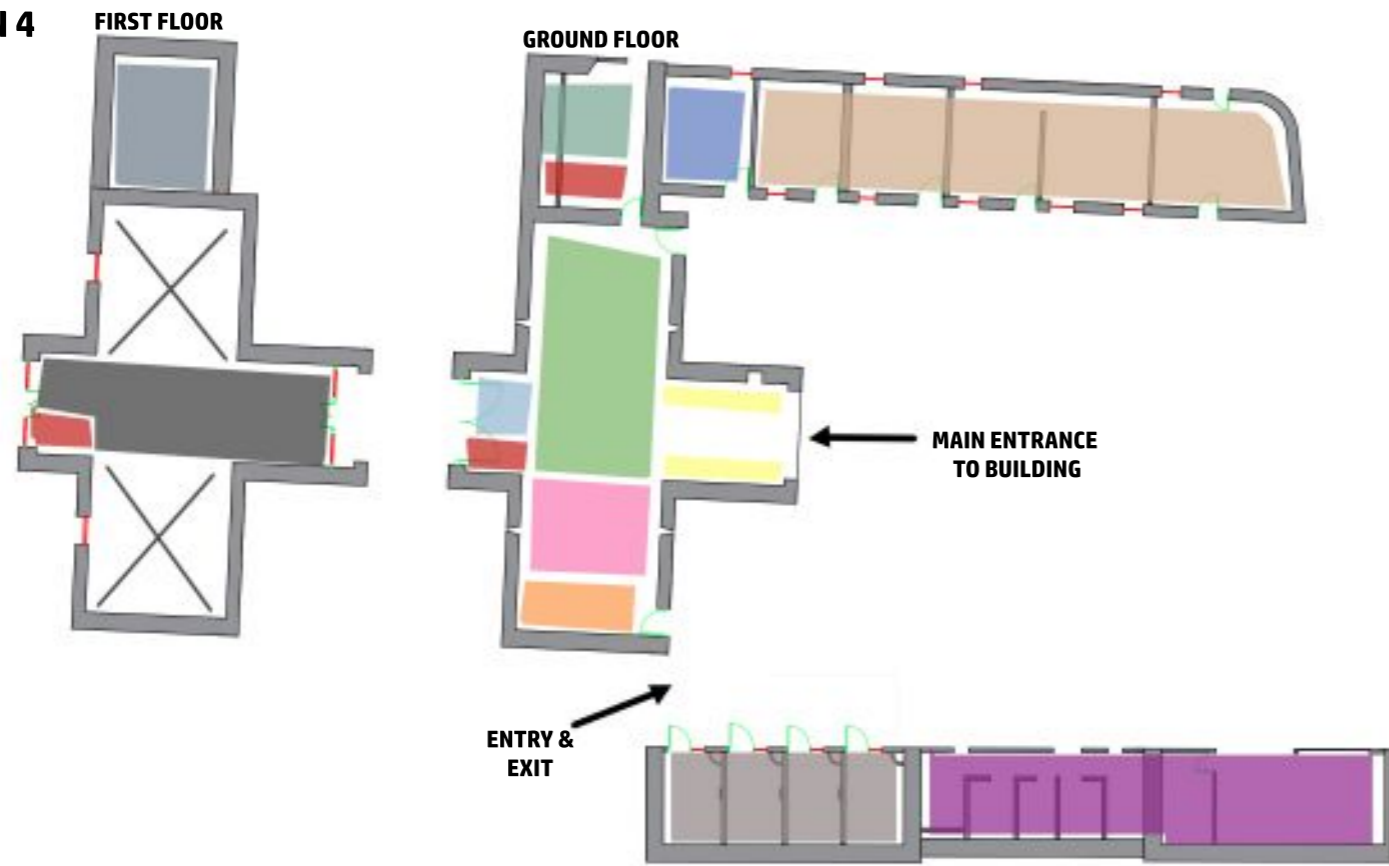
KEY

- CAR PORT
- DANCE FLOOR
- REFRESHMENTS
- DINING AREA
- CAKE STATION
- STAIRS
- TOILETS
- KITCHEN AREA
- LOUNGE AREA
- LIVE MUSIC
- STORAGE
- ACCOMMODATION AREA
- ⊗ VOID
- ENTRIES

ZONED PLANS

SCALED 1:200

DESIGN 4



DESIGN 5



KEY

- CAR PORT
- DANCE FLOOR
- REFRESHMENTS
- DINING AREA
- CAKE STATION
- STAIRS
- TOILETS
- KITCHEN AREA
- LOUNGE AREA
- ACCOMMODATION AREA
- STORAGE
- KIDS PLAY AREA
- CEREMONY/GAMES AREA
- ⊗ VOID
- ENTRIES

PRECEDENT STUDIES - HONEYMOON SUITE



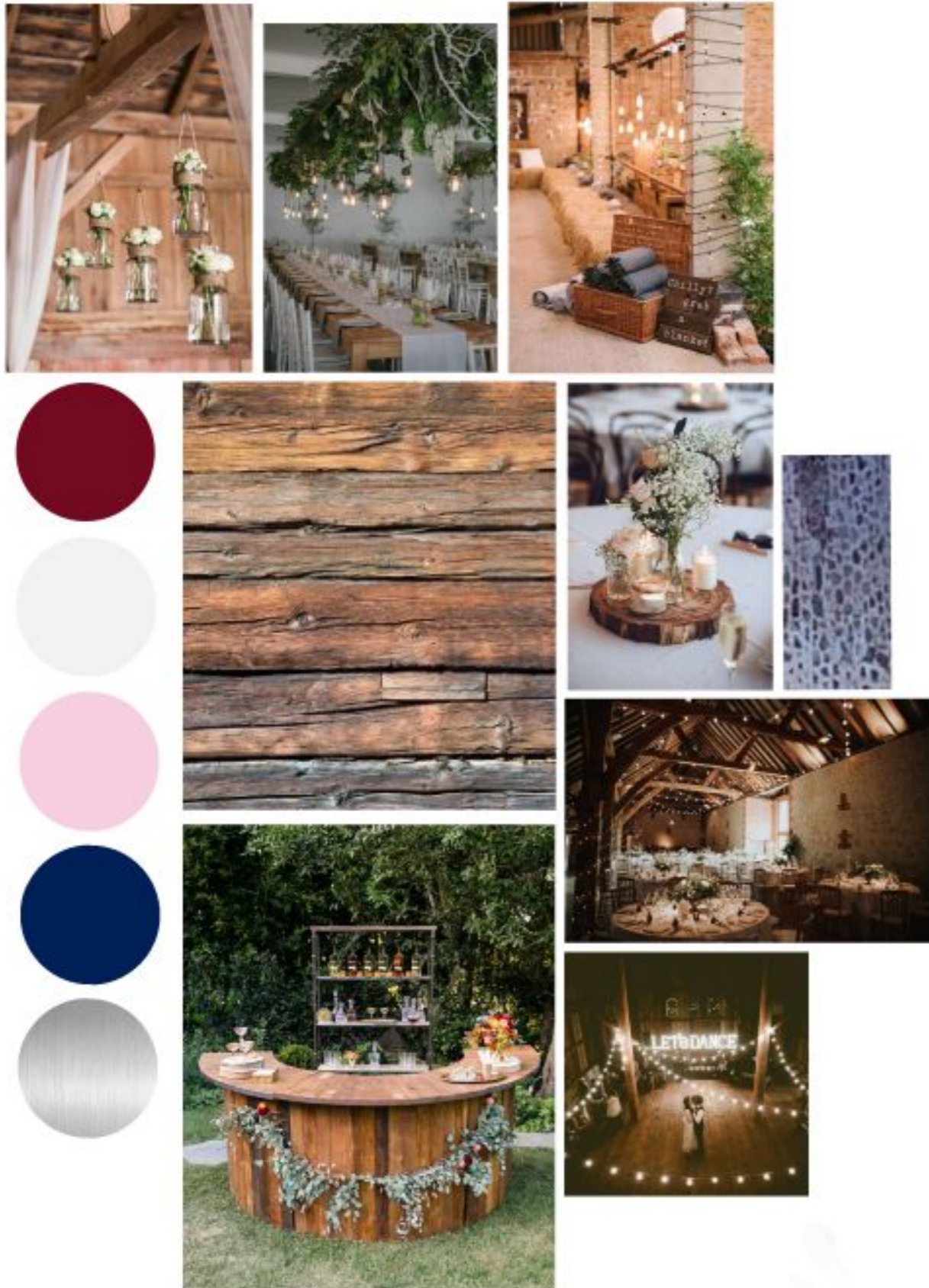
STANDARD BEDROOM SUITE



Creating these precedent studies has enabled me to keep to my brief of wanting to create a rustic barn with a modern twist and choosing the right finishes will play an important role. It has also allowed me to visualise the colour schemes that I would like to use throughout my design as well as materials and lighting fixtures.

PRECEDENT STUDIES - BARN WEDDING RECEPTION

WEDDING CEREMONY SETUP



MOODBOARDS

Original features of the barn

Throughout each of the rooms they will contain elements of the original barn features:

- Wooden Flooring
- Wooden panelling
- Wooden Beams
- Cobblestone



Main Barn



Bar



Bronze finishings

Barn Kitchen



Bronze finishings



Tiles

Marble

Barn Toilets



Bronze finishings

Storage Room



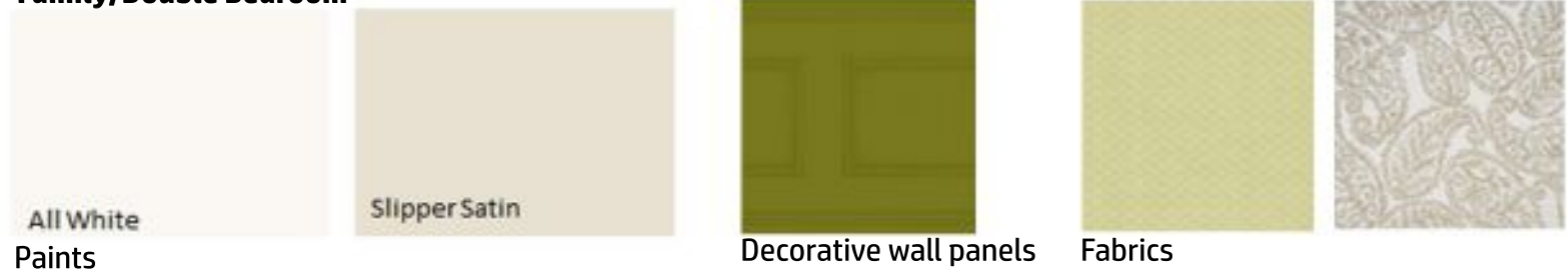
Concrete Flooring

MOODBOARDS

Kids Play Area



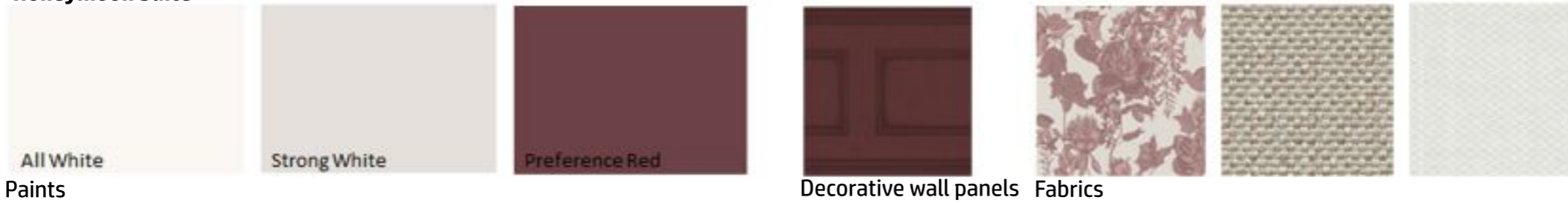
Family/Double Bedroom



Twin Bedroom



Honeymoon Suite



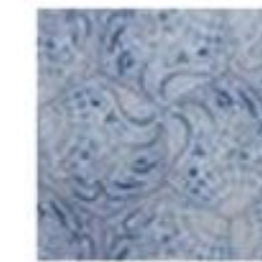
Accessible Honeymoon Suite



Bedroom Bathrooms



Paints



Tiles

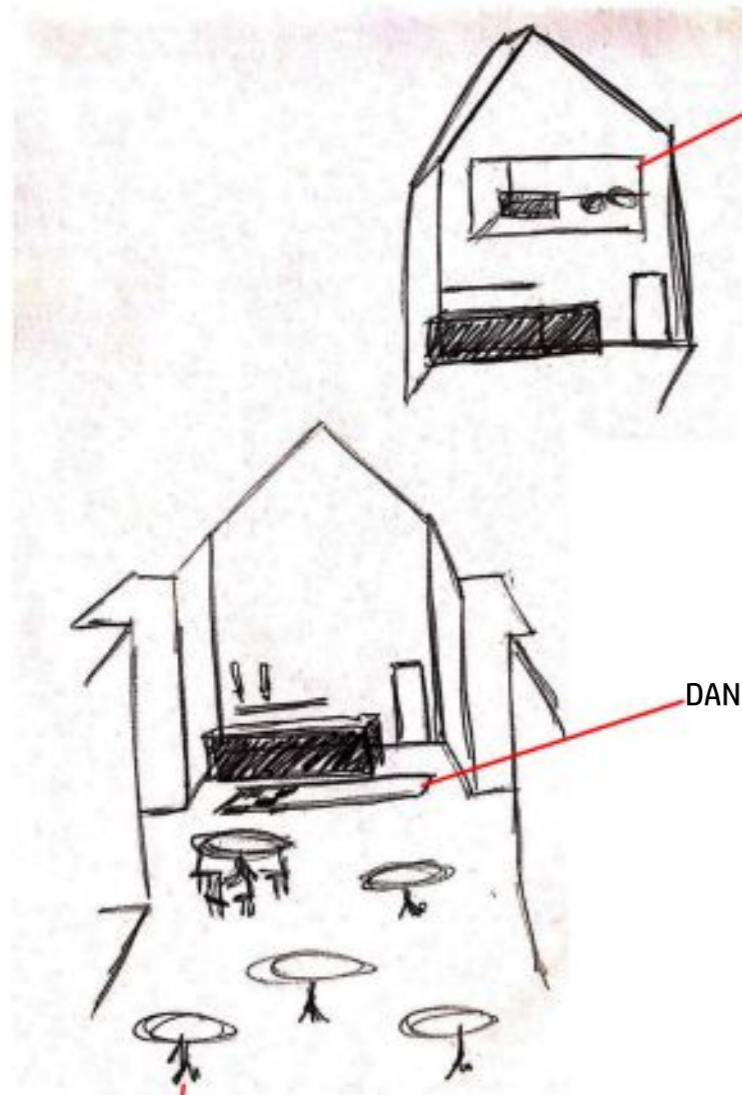
By using dark wall and ceiling colours for the honeymoon suites with only one contrast wall I have created a romantic feeling and made a bold statement.

DESIGN DEVELOPMENT

NOT TO SCALE

WHAT I NEED TO CONSIDER THROUGHOUT MY DESIGN:

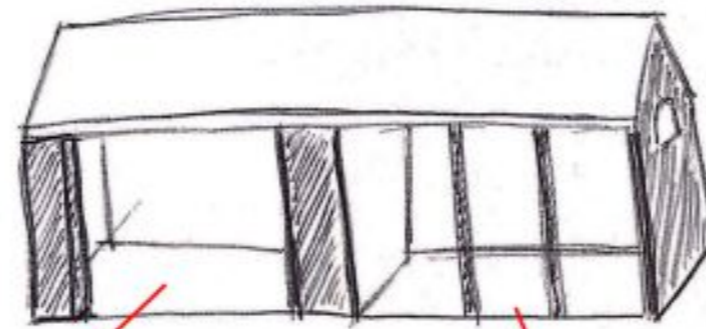
- Possibly add more windows to create more natural sunlight throughout the building.
- Consider whether I need to add walls in the storage space to create an organised zone for the chairs, tables and decor.
- Calculate the sizing of the accommodation rooms and how many I can fit into the floor plan.
- Make sure there is enough space for a accessible toilet
- Need to make the barn entrance accessible so that it is suitable for any couple.



GLASS WINDOW,
GIVING ACCESS TO
LOOKING INTO THE
KIDS PLAY AREA

DANCE FLOOR

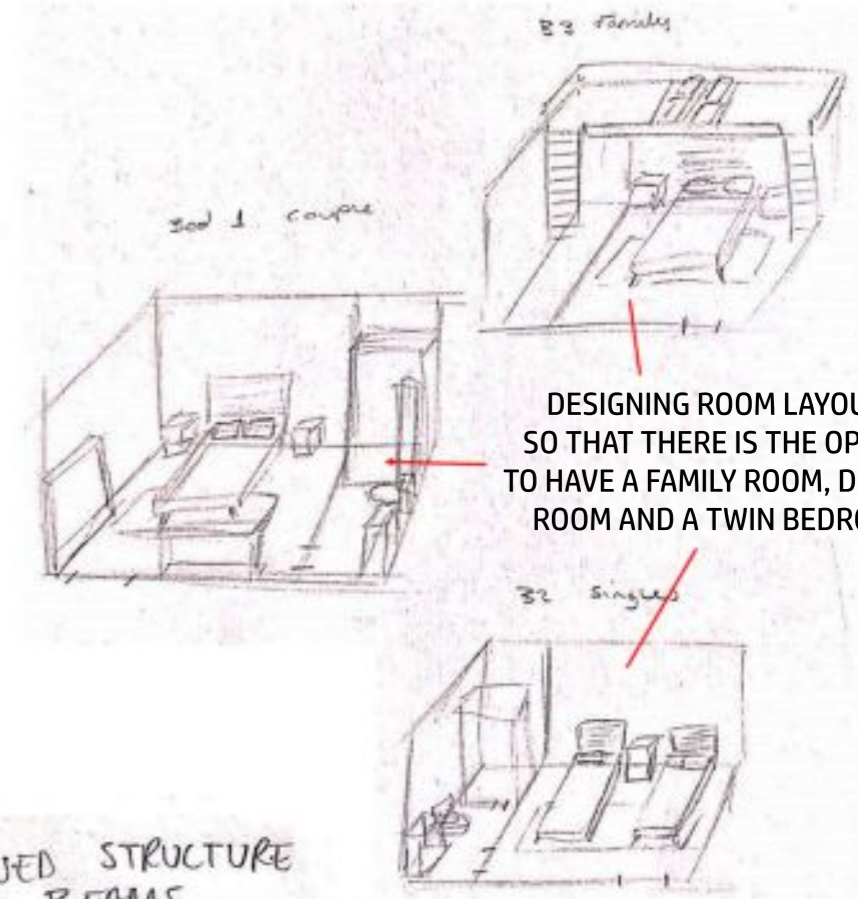
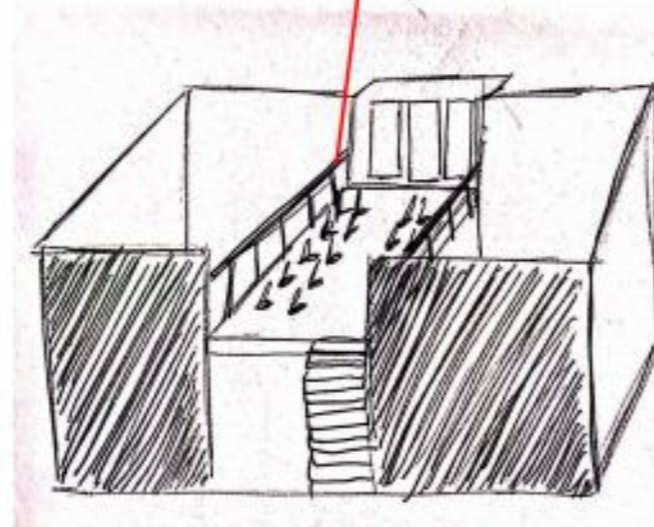
ROUND TABLES
TO GIVE AN INVITING
APPROACH



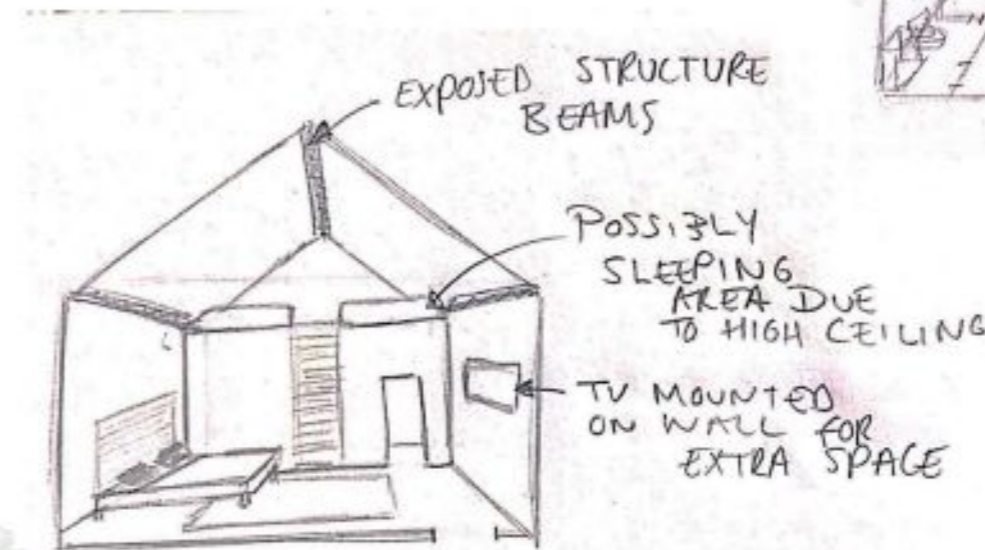
STORAGE

CAR PORT

MEZZAINE FLOOR THAT HOLDS
THE CEREMONY GIVING THE VIEWS
TO LOOK OVER THE SIDES FOR
A DRAMATIC ATMOSPHERE.



DESIGNING ROOM LAYOUTS
SO THAT THERE IS THE OPTION
TO HAVE A FAMILY ROOM, DOUBLE
ROOM AND A TWIN BEDROOM



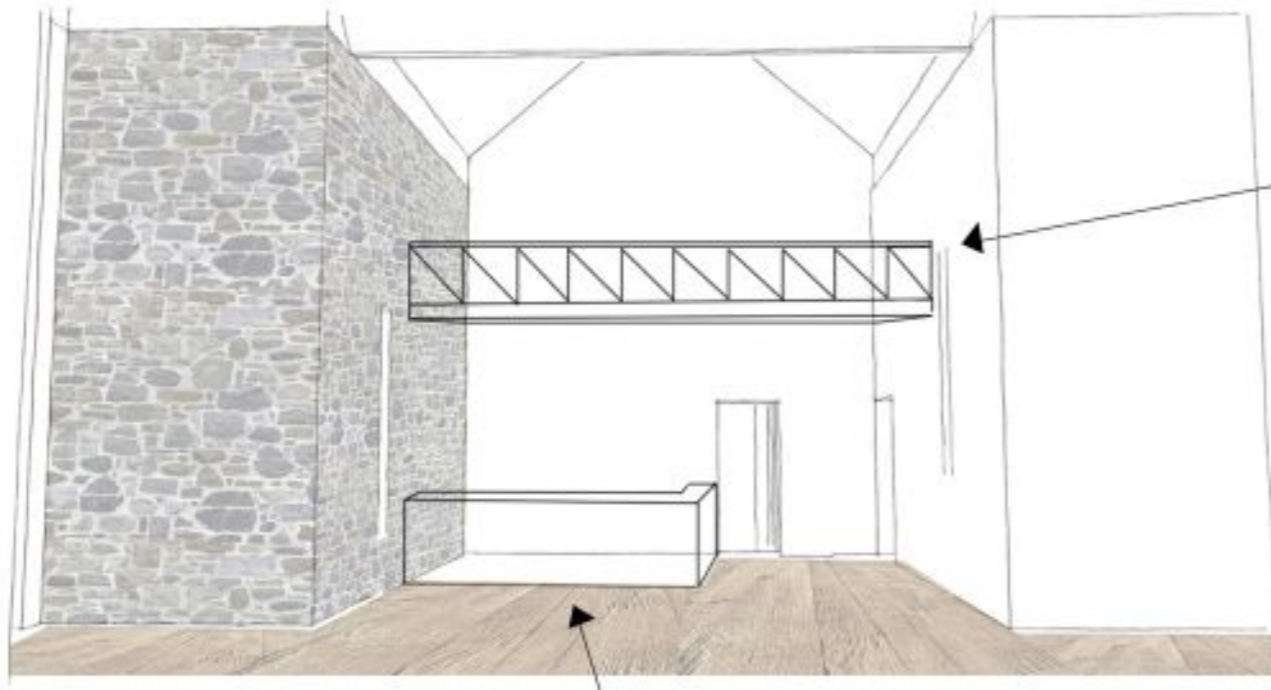
EXPOSED STRUCTURE
BEAMS

POSSIBLY
SLEEPING
AREA DUE
TO HIGH CEILING

TV MOUNTED
ON WALL FOR
EXTRA SPACE

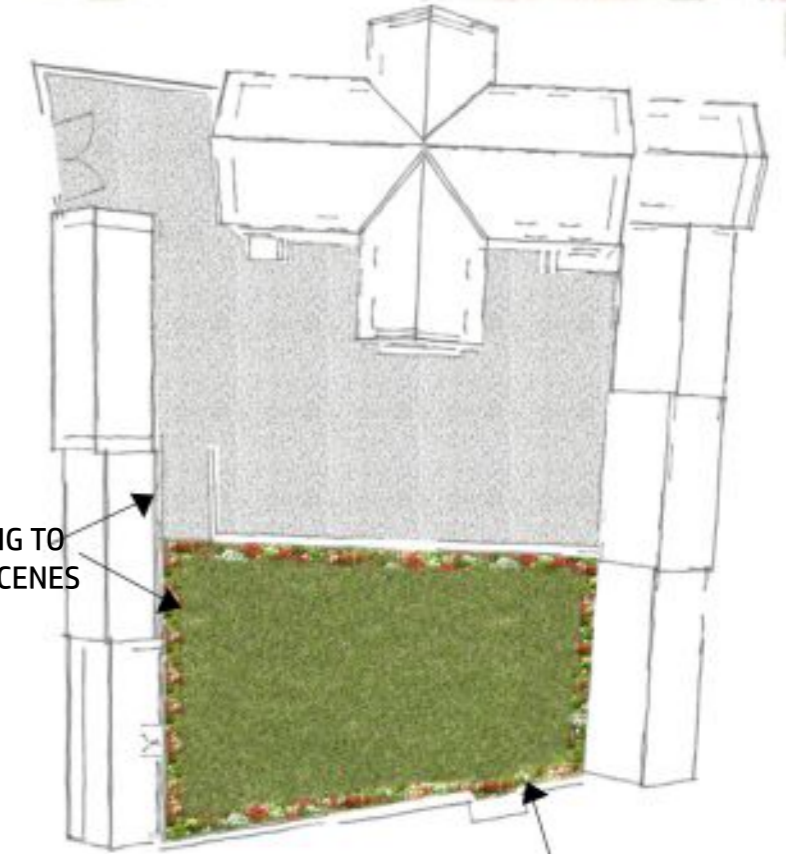
DESIGN DEVELOPMENT

NOT TO SCALE



BALCONY THAT'S CONNECTED TO THE HONEYMOON SUITE

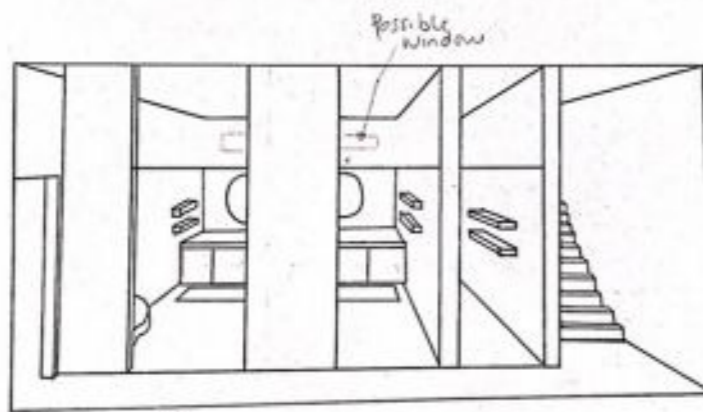
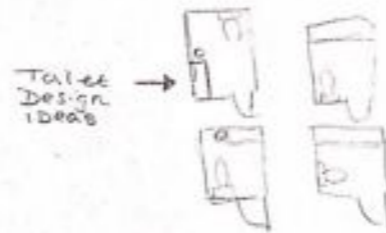
MINI BAR FOR REFRESHMENTS THROUGHOUT THE WEDDING RECEPTION



TIERED LANDSCAPING TO CREATE DIFFERENT SCENES

FLOWER BORDER AROUND THE LANDSCAPING TO BRING MORE COLOUR ONTO THE BUILDING SITE

- Toilet Area
- Exposed wood
 - Patterned tiled floor
 - Plants
 - Black features ie tap etc
 - light pine board as feature wall or tiles
 - possibly colour theme



← ADD WINDOW TO LIGHT AREA

- Pocket doors
- change to barn doors
- Think on how I can add windows in Bathrooms for sunlight to shine in

THE VIEW WHEN LOOKING INTO THE BARN ON, SHOWING HOW THE CEREMONY COULD LOOK LIKE FROM A DISTANCE



MODEL

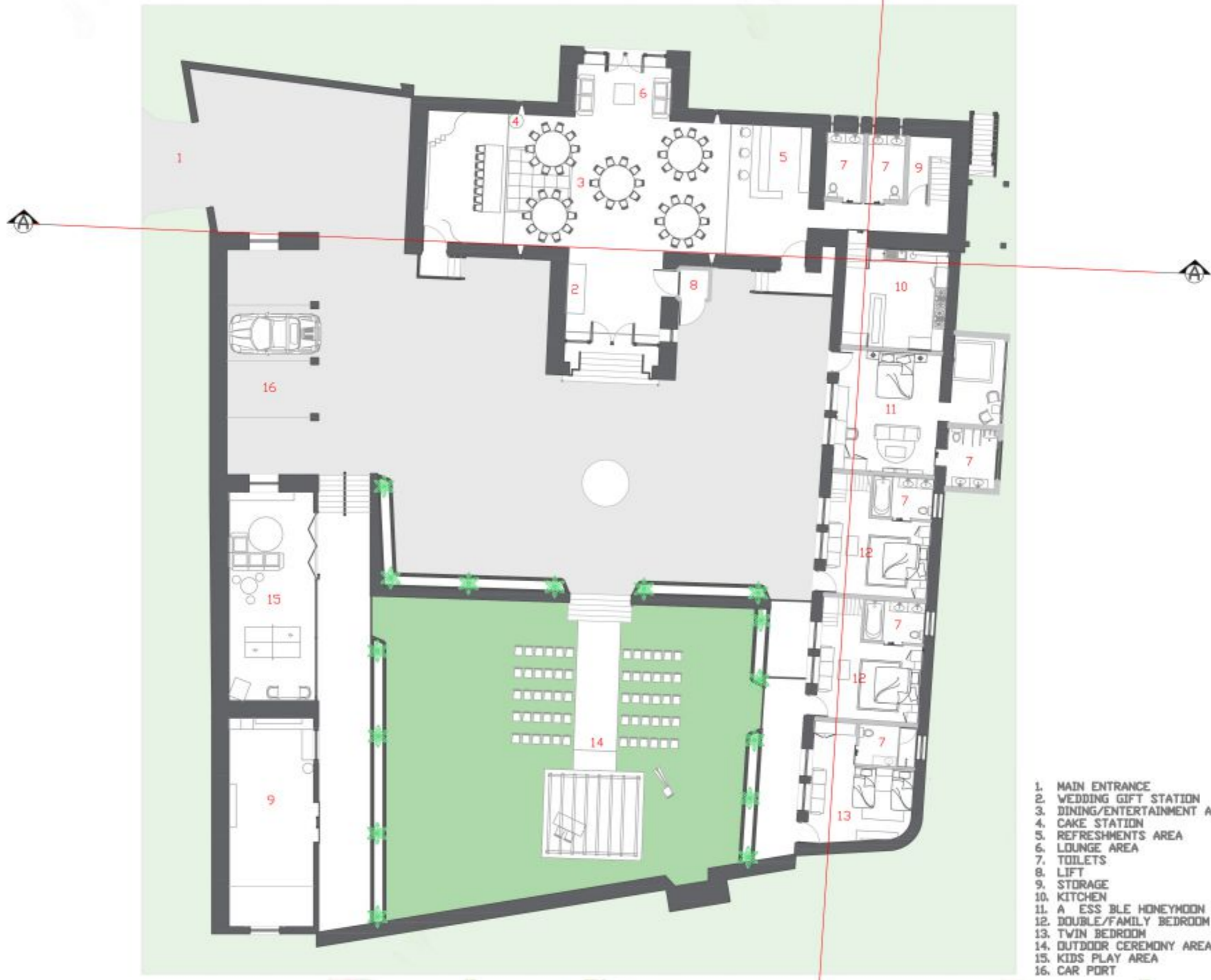
ROUGHLY SCALED 1:100



By creating a roughly scaled model at 1:100 I was able to better visualise what worked in my design layout and what needed improving. Since then I have:

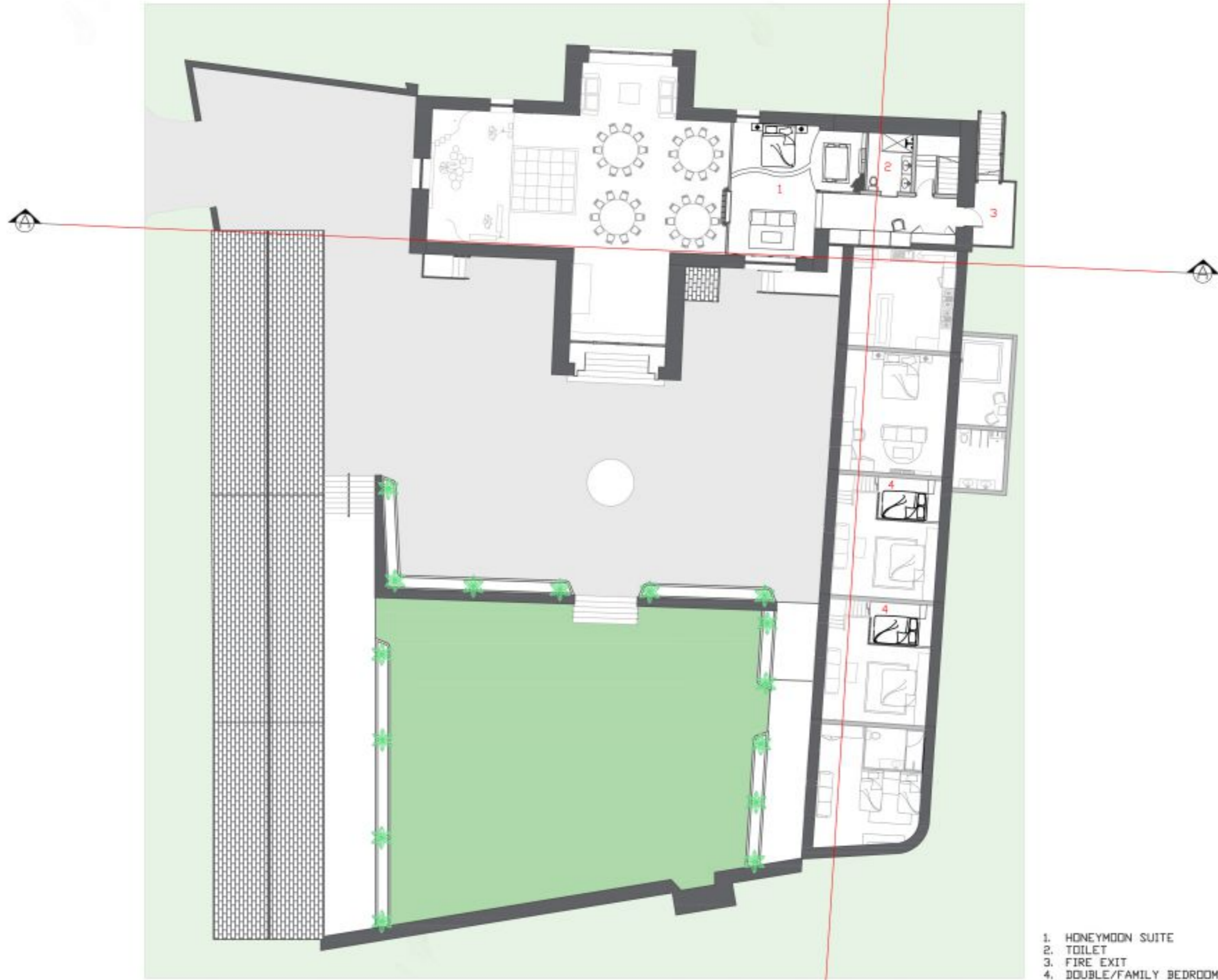
- Added a fire exit/balcony to the honeymoon suite.
- Added two large windows instead of one big window on the accommodation bedrooms.
- Cut through the main barn wall to make the honeymoon suite bigger converting it to have a Mezzaine Floor.
- Added sunlight windows in the roof to bring in more natural sunlight into the building as well as creating more views.

PLAN
GROUND FLOOR
SCALED 1:200



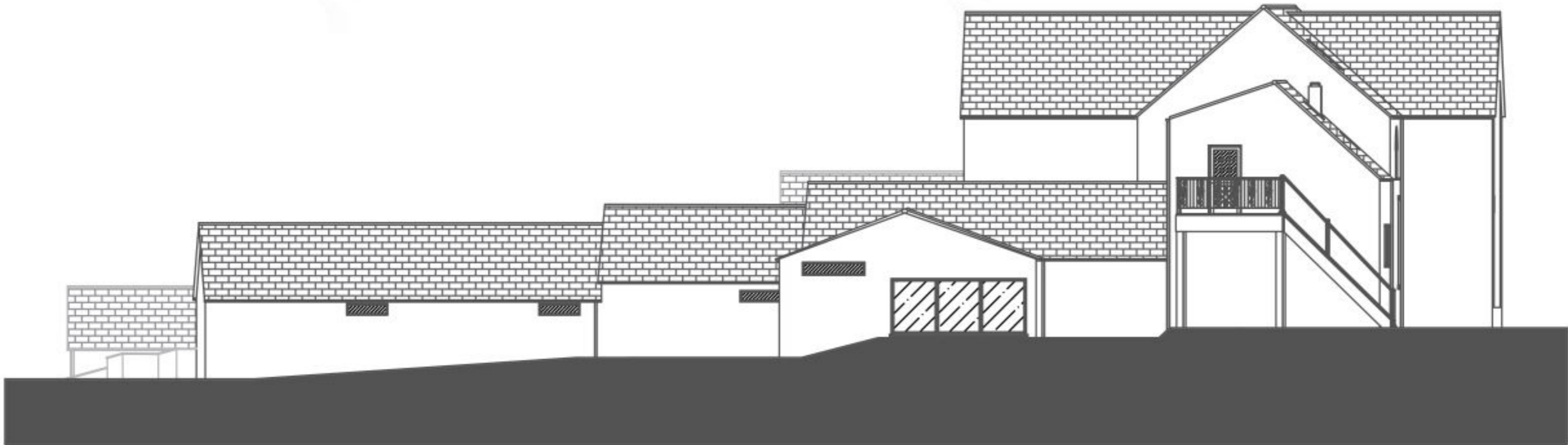
- 1. MAIN ENTRANCE
- 2. WEDDING GIFT STATION
- 3. DINING/ENTERTAINMENT AREA
- 4. CAKE STATION
- 5. REFRESHMENTS AREA
- 6. LOUNGE AREA
- 7. TOILETS
- 8. LIFT
- 9. STORAGE
- 10. KITCHEN
- 11. A ESS BLE HONEYMOON SUITE
- 12. DOUBLE/FAMILY BEDROOM
- 13. TWIN BEDROOM
- 14. OUTDOOR CEREMONY AREA
- 15. KIDS PLAY AREA
- 16. CAR PORT

PLAN
FIRST FLOOR
SCALED 1:200

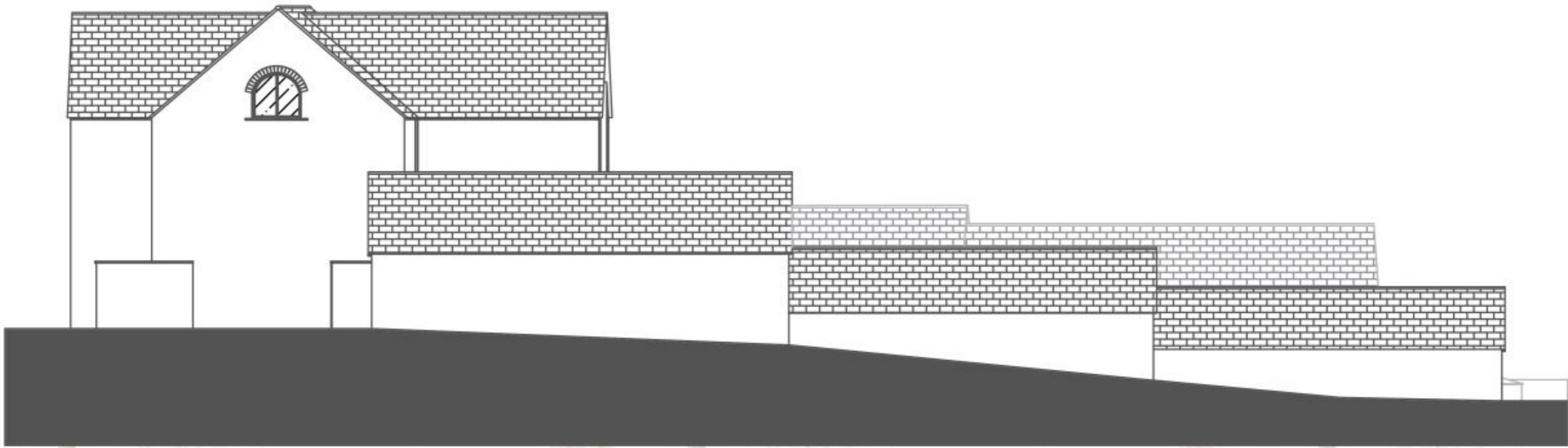


- 1. HONEYMOON SUITE
- 2. TOILET
- 3. FIRE EXIT
- 4. DOUBLE/FAMILY BEDROOM

ELEVATIONS
SCALED 1:100



NORTHWEST ELEVATION



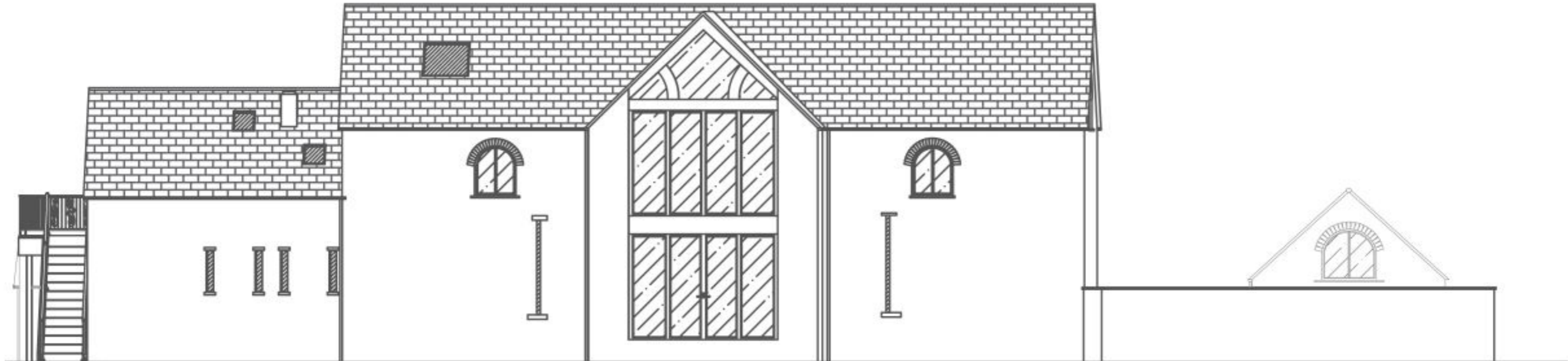
SOUTHEAST ELEVATION

ELEVATIONS

SCALED 1:100



FRONT FACADE



BACK FACADE
21

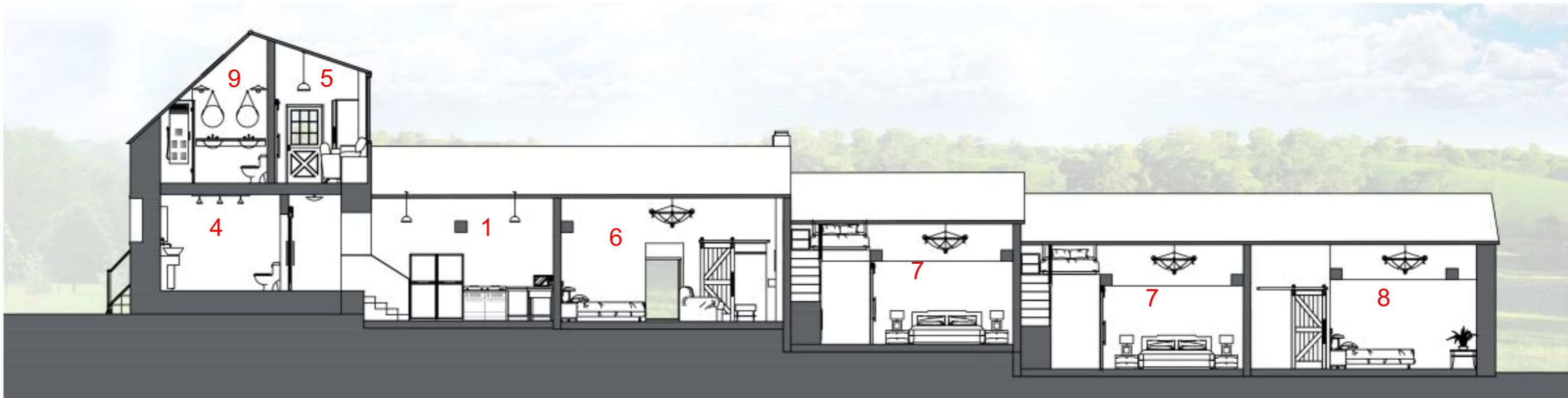
SECTIONS

SCALED 1:100

- 1. Kitchen
- 2. Refreshments Area
- 3. Dining/Entertainment Area
- 4. Toilets
- 5. Honeymoon Suite
- 6. Accessible Honeymoon Suite
- 7. Family/Double Bedroom
- 8. Twin Bedroom
- 9. Honeymoon Suite Bathroom



Section A



Section B

ISOMETRIC

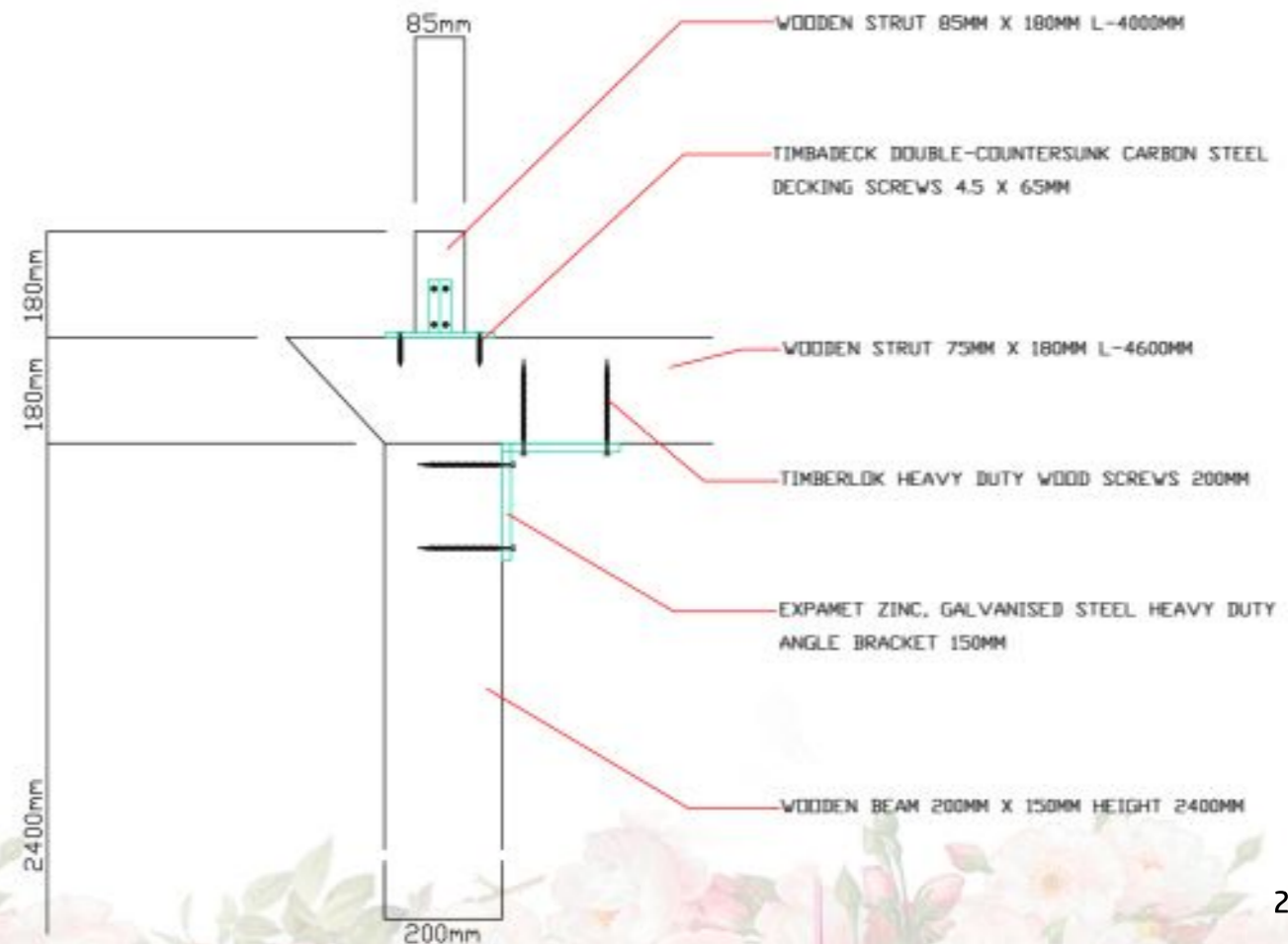
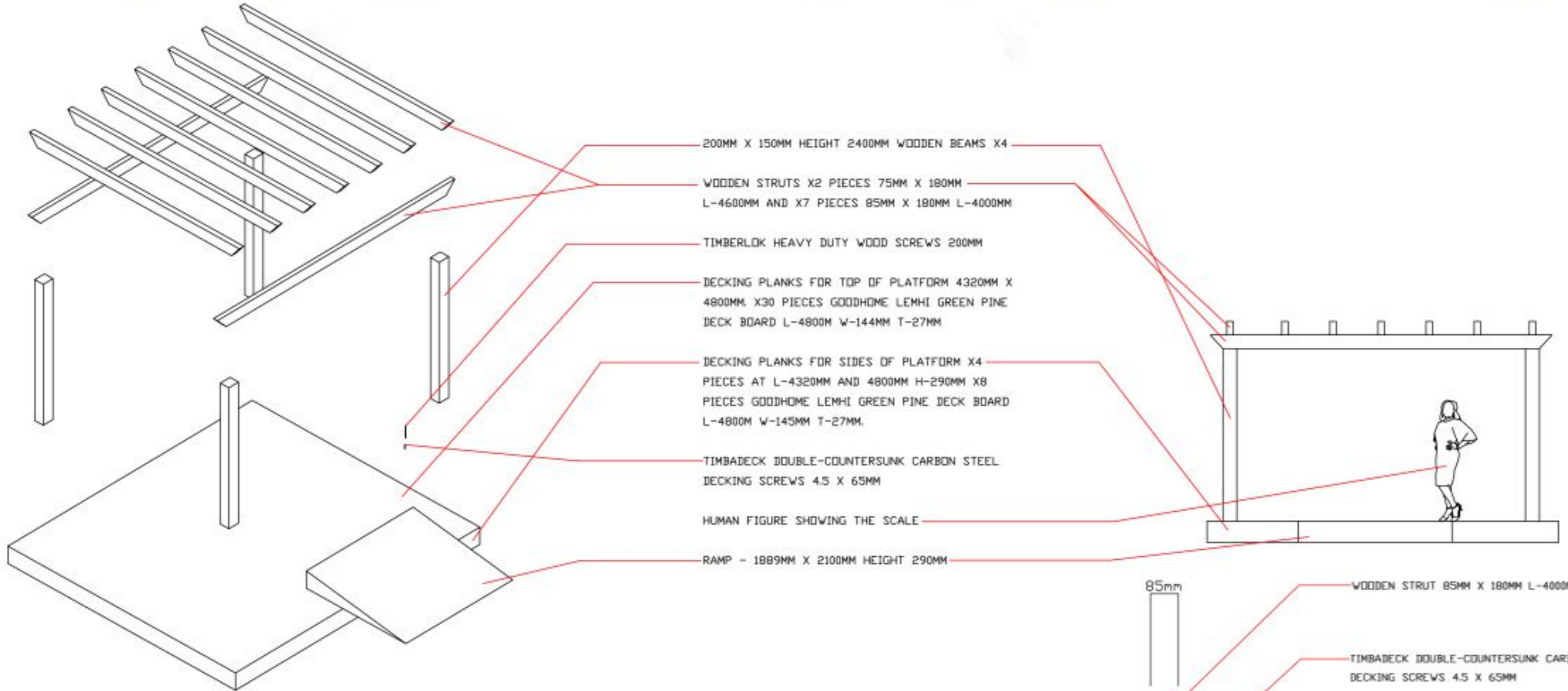
WHOLE BUILDING SITE



This Isometric of the building site gives a visualisation of how my design looks at its final stage.

From looking at the final stage of the design it still gives the feeling of a rustic barn due to keeping the original features but it has a modern twist to it.

MICROTECTONICS



Western Red Cedar Wood



Lemhi Green Pine Deck Boards



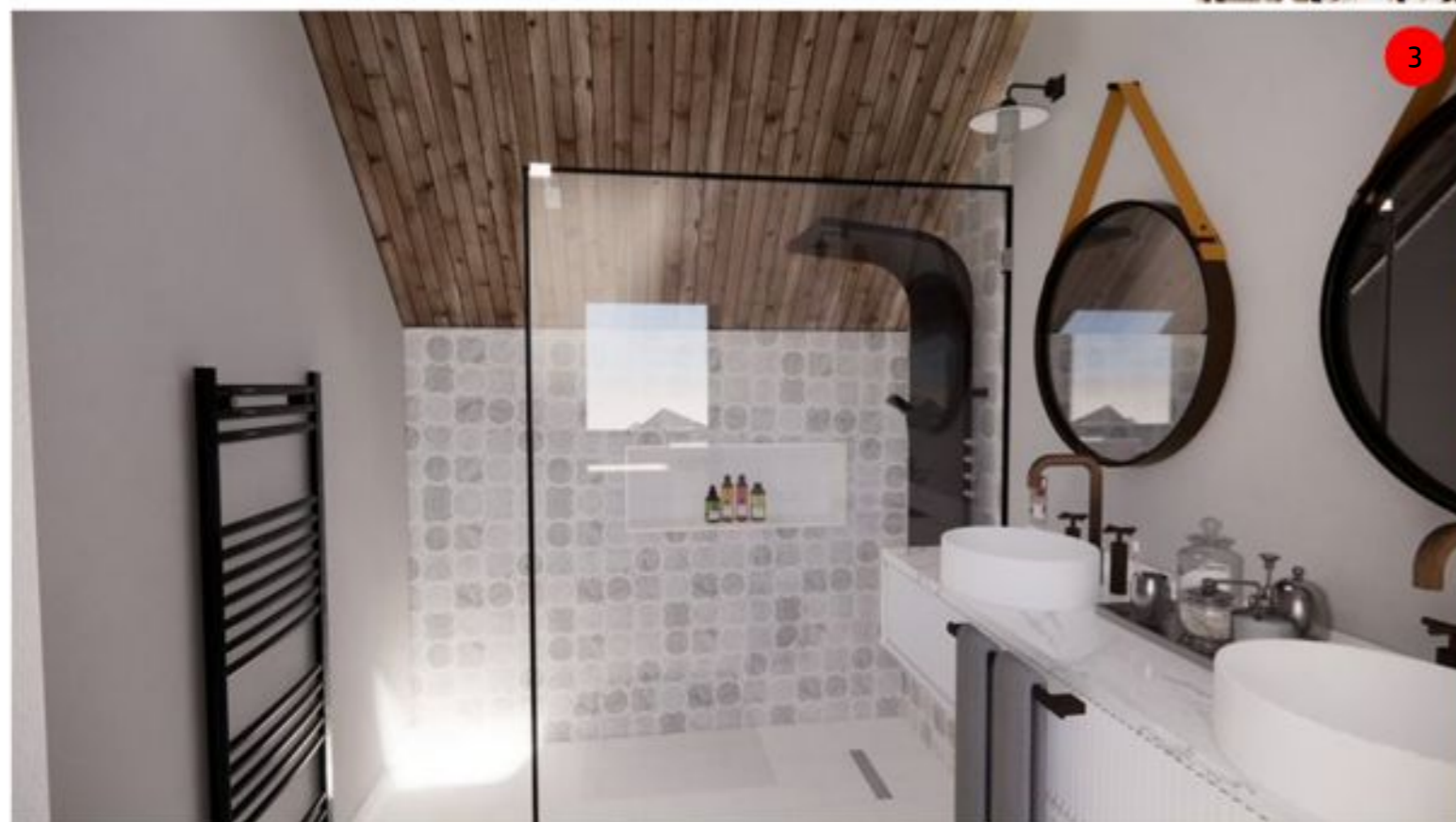
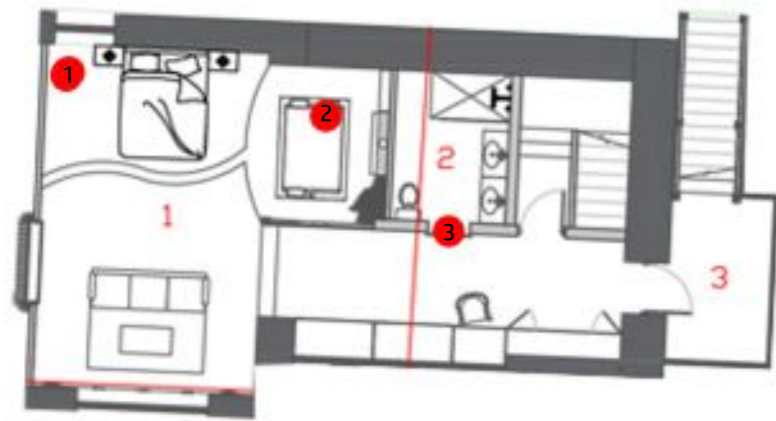
Cream Wool Carpet



Flower Decorations

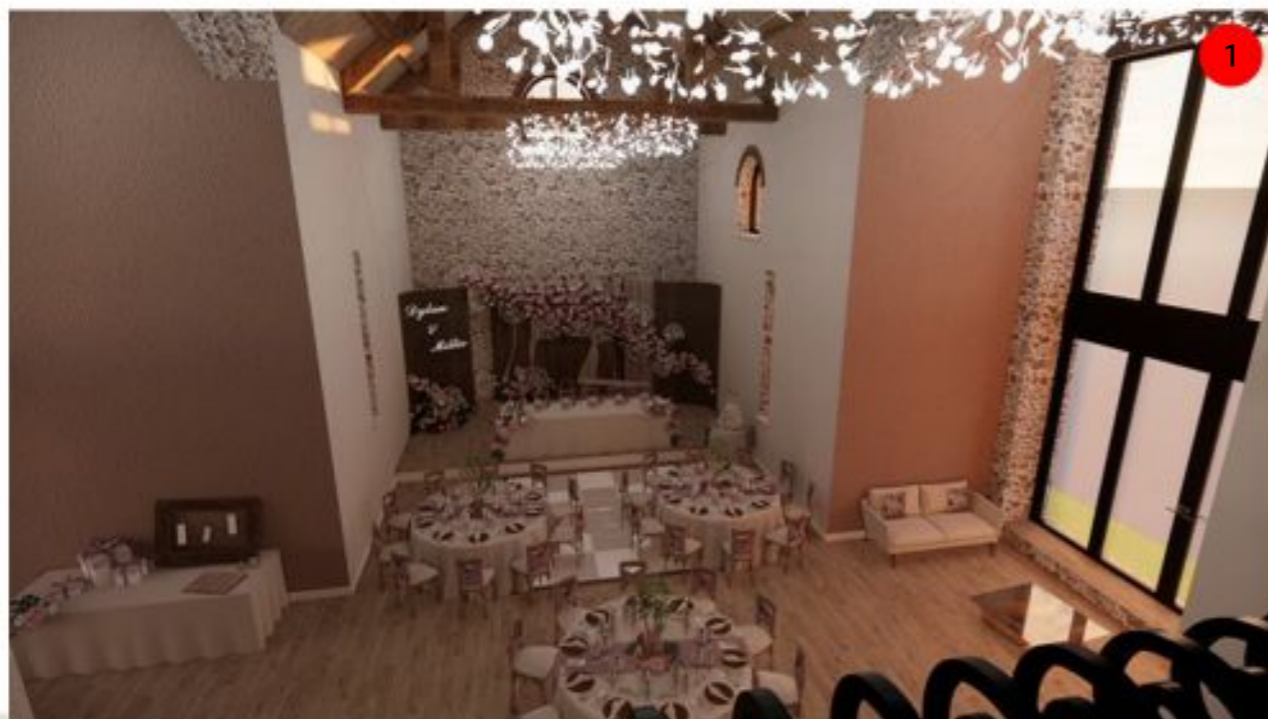
VISUALS

Additional views of the honeymoon suite



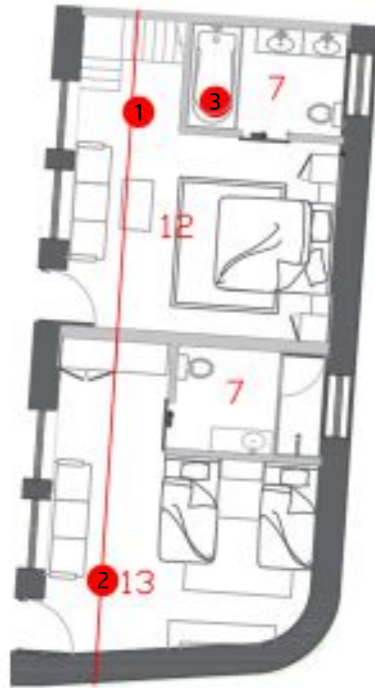
VISUALS

Additional views of the exterior and interior of main barn



VISUALS

Additional views of the twin bedroom and family/double bedroom as well as bathroom



VISUALS

Views of the kids play area



VISUALS

Additional views of the accessible honeymoon suite

