

# THE GRANARY

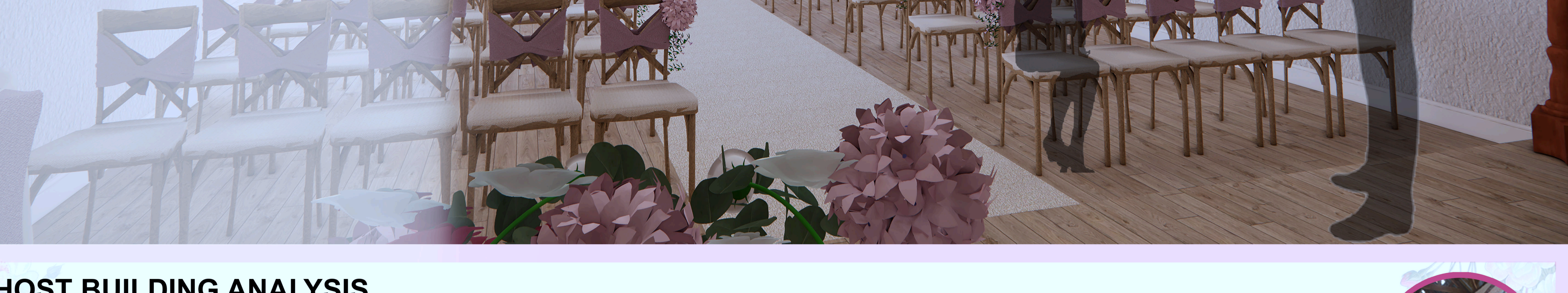
Rebecca Chick  
BA (Hons) Interior Design  
Cardiff Metropolitan University

## BRIEF

The Granary is an empty skeleton barn for most of the year with occasional use as an indoor tennis court. It overlooks scenic views which would be perfect to redesign into a wedding venue/ceremony with accommodation where celebrations and photographs can take place.

The design theme of the Granary is best fitted to be a rustic barn house to correspond to the farmhouses on the site plan but also the Granary's building features. Accents of colour are incorporated into the design to fit with the client's colour scheme.

By redesigning the Granary, it would be suitable for any couple who wish to have their wedding at this location. However, if the wedding season is slow it can be used for functions e.g., birthdays, fundraisers and a self-contained holiday home.



1 INDOOR CEREMONY LOOKING TOWARDS THE AISLE

## HOST BUILDING ANALYSIS



Location: The Granary, Croeslanfro Gardens, Rogerstone, NP10 9LH

Building: Unused Barn

Design: Wedding venue/ceremony with accommodation

### Note:

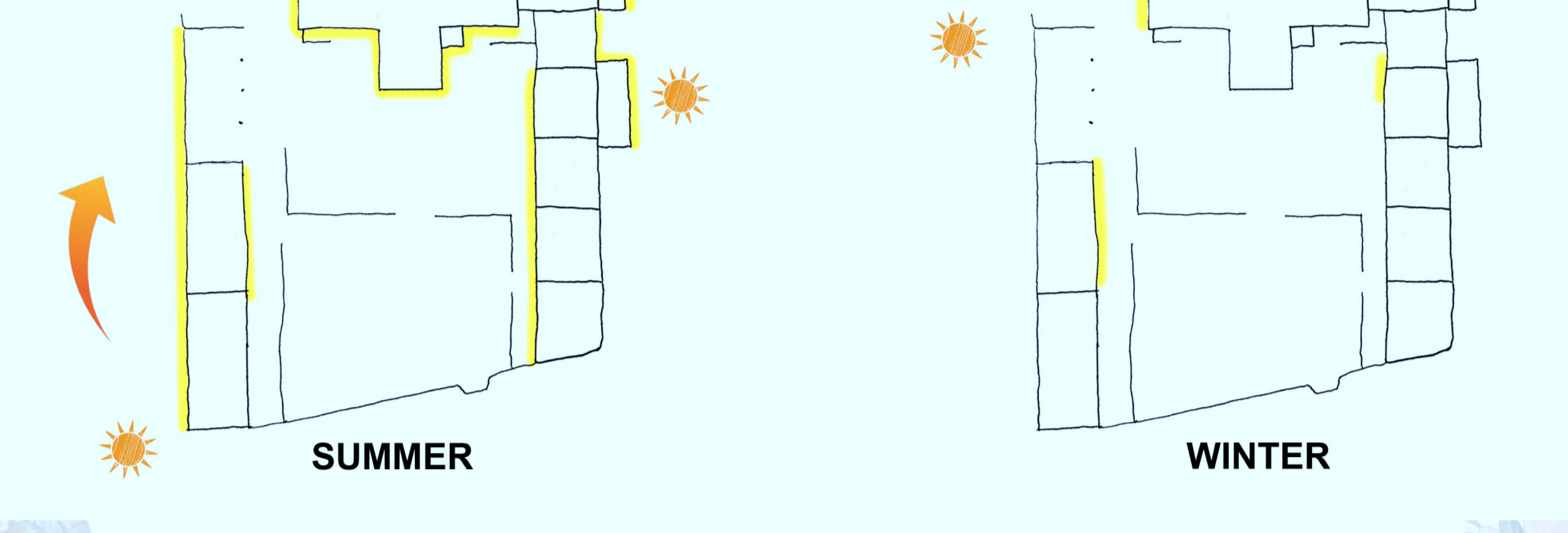
The grade II listed barn is of the early 19th Century, of an unusual scale where since listing in 1975 the roof had been taken down. However, today the owners have placed a new roof on the main barn and have restored the building as an indoor tennis court with the building to the right being rented out and the buildings to the left as storage.

1. Large open garden space providing the opportunity to transform into an outdoor ceremony space. It is level and can easily accommodate plenty of chairs for the ceremony and is accessible disabled people.
2. Exposed beams and cream painted stone gives a barn feeling. The high ceilings also provides the opportunity to use dramatic lighting.
3. The skeleton interior of the barn gives the option to add floor levels which can change the overall experience and make the interior more appealing.
4. Windows throughout the building looking onto scenic views makes the venue ideal for photographs, whilst also giving a luxurious atmosphere for the clients.
5. The variety of windows that have been added over the years allows the natural sunlight to stream in. However it still needs some artificial lighting.



## SUN PATH

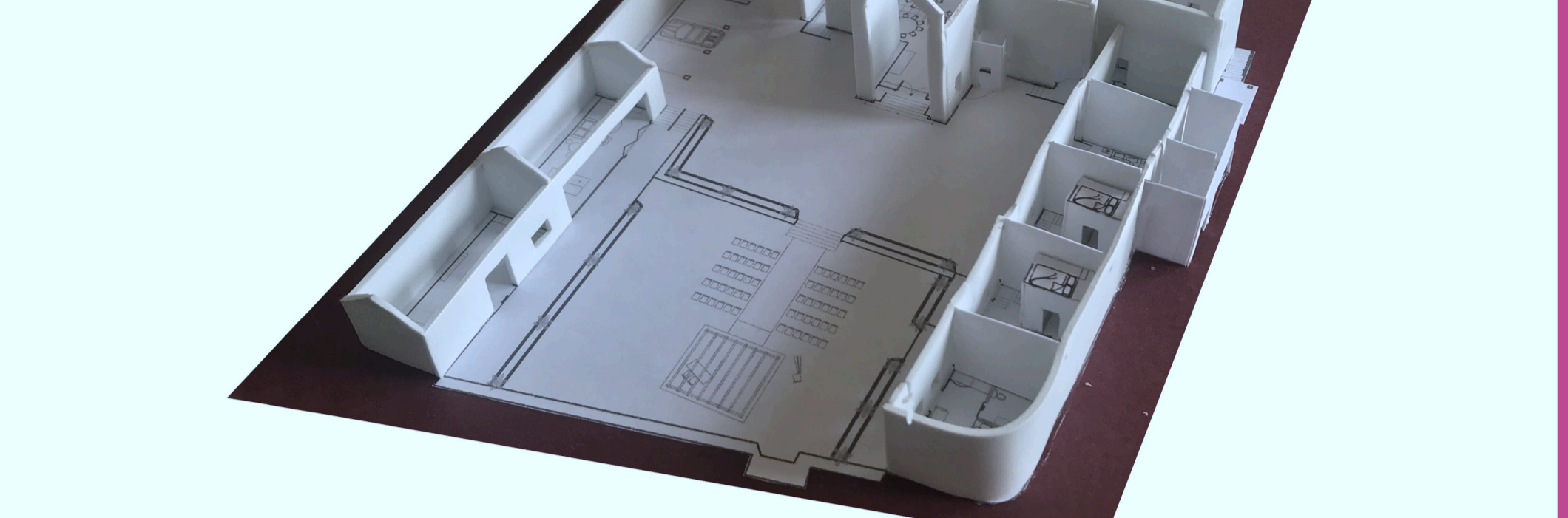
Not to scale



- Artificial lights needed for the safety of the guests in the evening when sun sets to avoid trip hazards. But especially for the winter due to darker evenings.
- The Granary receives lots of natural sunlight throughout the day during the summer. However in the winter the building receives much less sunlight meaning that outdoor wedding ceremonies are less likely to happen due to weather conditions. It could also lead to fewer weddings happening, therefore in absence of weddings the barn can be hired out for other functions e.g., birthdays, work parties etc.

## MODEL

Scaled 1:200 @ A4

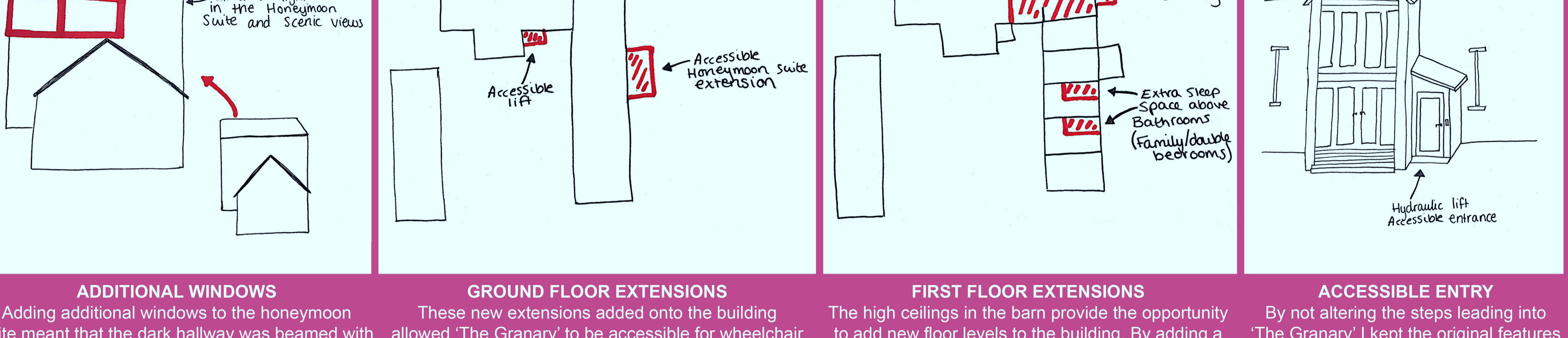


By making a model of 'The Granary' it has enabled me to get a visualisation of my building, to see if the new design layout is suitable for it's purpose whilst also seeing if all the rooms are functional. It has also allowed for small changes to be made which can improve my design layout.

When making all the final changes to the floor plans, the next stage was the landscaping as this was a key aspect to my design as I wanted to give the opportunity for couples to have their wedding ceremony outdoors. This led to the decision to make the landscaping tiered.

## KEY MOVE DIAGRAMS

Not to scale



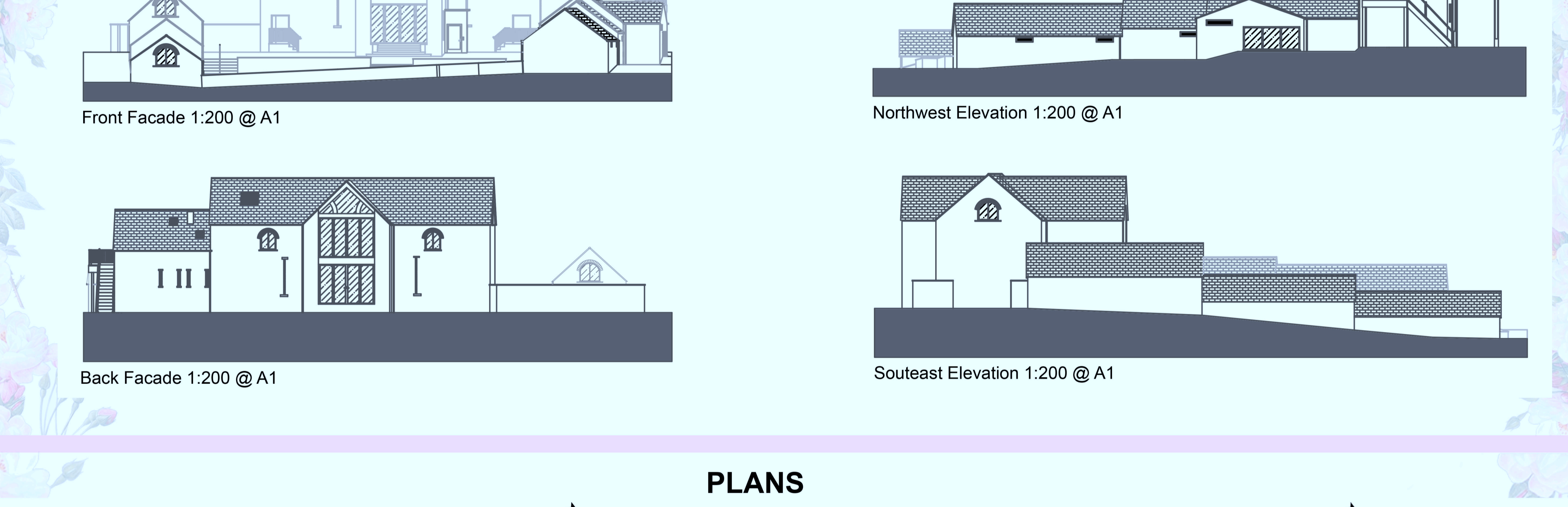
**ADDITIONAL WINDOWS**  
Adding additional windows to the honeymoon suite meant that the dark hallway was beamed with sunlight, whilst also creating more scenic views giving the newly-weds a luxury stay at 'The Granary' with the opportunity to watch the sunset or star gaze.

**GROUND FLOOR EXTENSIONS**  
These new extensions added onto the building allowed 'The Granary' to be accessible for wheelchair users etc. as before it was not wheelchair friendly. It also allows them to have the same luxurious experience that non-wheelchair users would have in the honeymoon suite.

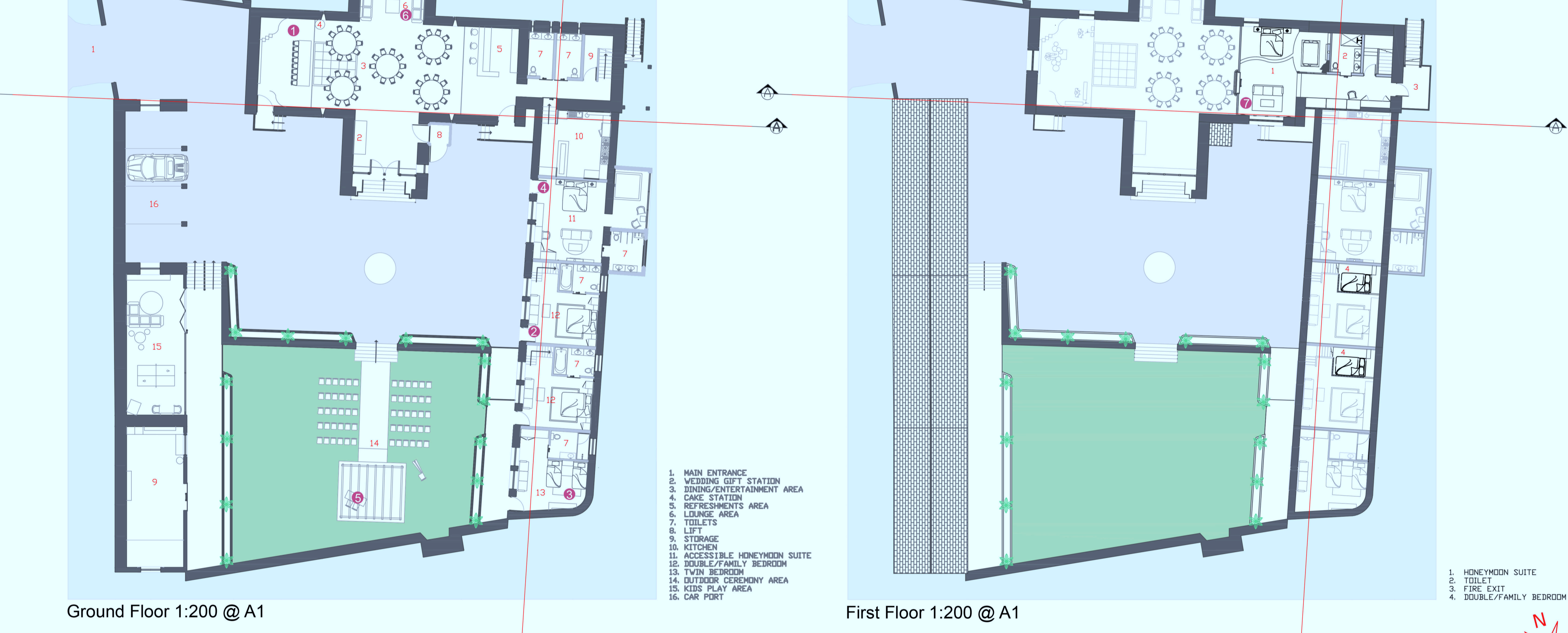
**FIRST FLOOR EXTENSIONS**  
The high ceilings in the barn provides the opportunity to add new floor levels to the building. By adding a floor level in the honeymoon suite it gives the newly-weds a spacious but luxury room. Whilst also connecting a fire exit balcony to the room it creates a quick and safe exit if needed in result of a fire.

**ACCESSIBLE ENTRY**  
By not altering the steps leading into 'The Granary' I kept the original features of the barn. There was a need to add a lift to the side of the barn to create a main access for wheelchair users etc. so that it would be functional for all users whilst also keeping it close to the accessible honeymoon suite.

## ELEVATIONS



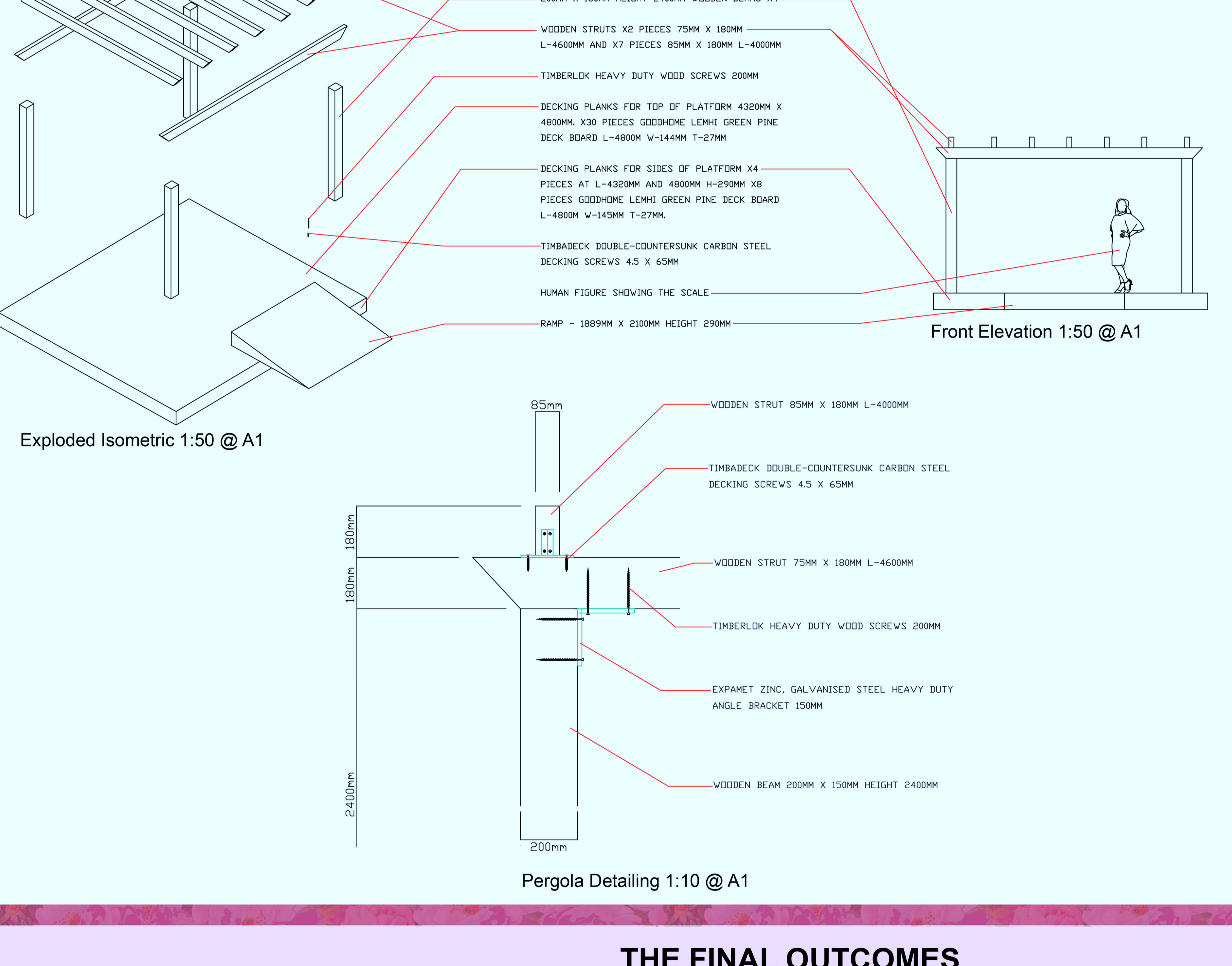
## PLANS



## SECTIONS



- Key**
1. Kitchen
  2. Refreshments Area
  3. Dining/Entertainment Area
  4. Toilets
  5. Honeymoon Suite
  6. Accessible Honeymoon Suite
  7. Family/Double Bedroom
  8. Twin Bedroom
  9. Honeymoon Suite Bathroom



- ### MICROTECTONICS
- Outdoor wedding ceremony pergola
- MATERIALS:**
1. Western Red Cedar wood used for the main structure of the pergola due to it's:
    - Good strength
    - High in resin and oils it repels dirt, insects, rot and decay.
    - Can be left several years without treatment
  2. Lemhi Green Pine Deck Boards used for the platform of the pergola as it's:
    - Suitable for outdoor use and can have direct contact with the ground
    - Affordable
    - Sustainable
    - Rot resistant and paintable
  3. Wool carpet for the aisle as it's:
    - Natural
    - Sustainable
    - Retains it's appearance
    - Soft and durable
    - Easy to clean
    - Flame retardant
    - Long lasting
  4. Flowers that decorates the pergola in the style that fits the couples wedding theme

## THE FINAL OUTCOMES



4 ACCESSIBLE HONEYMOON SUITE

2 FAMILY/DOUBLE BEDROOM

3 TWIN BEDROOM

6 ENTERTAINMENT ARRANGEMENT

5 OUTDOOR CEREMONY

9 HONEYMOON SUITE